

DOCUMENT RESUME

ED 389 244

HE 028 763

TITLE Utilization of Residence Hall Facilities, Fall 1994 with Trends from Fall 1985. Report No. 9-95.

INSTITUTION State Univ. of New York, Albany. Office of Institutional Research and Planning.

PUB DATE Oct 95

NOTE 106p.

AVAILABLE FROM Office of Institutional Research, State University of New York, University Plaza, Albany, NY 12246.

PUB TYPE Reports - Evaluative/Feasibility (142) -- Statistical Data (110)

EDRS PRICE MF01/PC05 Plus Postage.

DESCRIPTORS *College Buildings; *College Housing; Dormitories; *Educational Finance; Enrollment Projections; *Facility Utilization Research; Higher Education; Income; Resident Assistants; Residential Colleges; Residential Patterns; *Space Utilization; State Colleges; State Surveys; Tables (Data); Trend Analysis

IDENTIFIERS New York; *State University of New York

ABSTRACT

Data were gathered and analyzed in fall 1994 on the use of residence hall facilities at all New York state operated colleges with residence halls, and these data were also analyzed for trends in comparison with data since 1985. Twenty-six institutions were surveyed. Findings included the following: (1) total utilization of residence hall facilities (headcount) was 58,054, a decline for the fourth consecutive year and the smallest headcount in the past 10 years; (2) net revenue producing adjusted design capacity also decreased from 1993; (3) the average number of students per resident assistant for the system as a whole remained relatively constant for the past 10 years; (4) percent utilization of net revenue producing adjusted design capacity was 95.8 percent, marginally lower than the previous year of 96 percent; (5) at the University Center at Binghamton, percent utilization surpassed 100 percent and rose to 100.7 percent from 98.7 percent in 1993; (6) percent utilization at colleges of technology and agriculture increased from 96 percent in Fall 1993 to 103.8 percent in 1994; (7) of the institutions surveyed, eight were over-utilized or crowded and one was exactly at capacity. Twelve tables present the data in detail. Appendixes contain a map of institutions and a chronology of their establishment. (JB)

* Reproductions supplied by EDRS are the best that can be made *
 * from the original document. *

ED 389 244

UTILIZATION OF
RESIDENCE HALL FACILITIES, FALL 1994
WITH TRENDS FROM FALL 1985

BEST COPY AVAILABLE

AE028763

U.S. DEPARTMENT OF EDUCATION
Office of Educational Research and Improvement
EDUCATIONAL RESOURCES INFORMATION
CENTER (ERIC)

X This document has been reproduced as
received from the person or organization
originating it.

(*) Minor changes have been made to improve
reproduction quality.

• Points of view or opinions stated in this docu-
ment do not necessarily represent official
OEI position or policy.

PERMISSION TO REPRODUCE THIS
MATERIAL HAS BEEN GRANTED BY

SUNY, Albany

TO THE EDUCATIONAL RESOURCES
INFORMATION CENTER (ERIC)

Office of Institutional Research
Report No. 995

**UTILIZATION OF RESIDENCE HALL FACILITIES, FALL 1994
WITH TRENDS FROM FALL 1985**

Report Number 9-95

SYSTEM ADMINISTRATION OFFICE OF INSTITUTIONAL RESEARCH
STATE UNIVERSITY OF NEW YORK
October 1995

TABLE OF CONTENTS

	Page
PREFACE	v
INTRODUCTION	vii
SUMMARY OF DATA	ix
DEFINITIONS	xiii

PART ONE -- DETAILED TABLES, FALL 1994

Table 1--Utilization of Original Design Capacity of Residence Hall Facilities, Fall 1994	3
Figure 1--Fall 1994 Utilization by Institution within Institution Type	5
Table 2--Utilization of Net Revenue Producing Adjusted Design Capacity, Fall 1994	6
Table 3--Student Occupancy of Net Revenue Producing Adjusted Design Capacity, Fall 1994	8
Table 4--Revenue-Producing "Other" Utilization and Percent of Revenue Generated, Fall 1994	17
Table 5--Utilization of Net Revenue Producing Adjusted Design Capacity by Rate, Fall 1994	19
Table 6--Distribution of Resident Assistant Bed Rental Waivers in Residence Hall Facilities, Fall 1994	27
Table 7--Resident Assistant Bed Rental Waivers in Residence Hall Facilities, Fall 1994	29

TABLE OF CONTENTS

Page

PART TWO -- TRENDS, FALL 1985 THROUGH FALL 1994

Table 8--Total Utilization of Net Revenue Producing Adjusted Design Capacity of Residence Hall Facilities	33
Table 9--Percent Utilization of Net Revenue Producing Adjusted Design Capacity	34
Figure 2--Trends in Percent Utilization for Each Institution	35
Table 10--Non-Revenue Assignments in Residence Hall Facilities	42
Table 11--Revenue Producing Utilization of Residence Halls for Purposes Other Than Resident Student Occupancy	43
Table 12--Number of Students per Resident Assistant	44

PART THREE -- APPENDIX

Map of State University Institutions

Chronology of Dates of Establishment of Institutions of
The State University of New York

Publications List

PREFACE

This report on Utilization of Residence Hall Facilities consists of detailed data collected in the twenty-first annual survey during the Fall of 1994. The report also contains summary data for Fall 1985 through Fall 1994. Detailed tables for Fall 1974 through Fall 1993 inclusive are available in earlier reports published by this office (see the Publications List in the appendix). Details regarding the residence hall program are important in the planning and budgetary functions of each institution. While the survey was specifically designed to meet the data requirements of the State University System Administration Offices of Institutional Research and Planning, Finance and Business, and Student Affairs and Special Programs, requests for these data have subsequently come from many sectors both inside and outside of the State University.

The study includes all State-operated institutions with State-operated residence hall facilities. A listing of these institutions, organized by institution type, can be found on page vi; reference to institution type in this publication, therefore, includes only those institutions listed. The residence hall needs of students at the SUNY College of Environmental Science and Forestry are served by Syracuse University; those at the NYS Statutory Colleges at Cornell by Cornell University; and those at the NYS Statutory College of Ceramics by Alfred University. These institutions are not included in the study. Residence hall facilities available at locally sponsored Community Colleges under the program of the State University of New York are financed in a different manner from those of the State-operated colleges and are also not included in the study. (Only a few Community Colleges have residence hall facilities.)

Graphic displays of percent utilization of residence hall facilities are again included in this publication. Trend data as well as Fall 1994 utilization are displayed for each institution within institution type.

A study of this complexity could not have been completed without the full cooperation of the institutional respondents and of other System Administration Offices. We also thank our secretarial staff, Vikki Mazzone and Kathy Bartoszewicz, who prepared the final transcript and distributed all copies of the publication.

Tommy Annas
Assistant Provost for Institutional Research

Marilyn Sango-Jordan
Associate for Institutional Research

**State-Operated Institutions
with Residence Hall Facilities**

University Centers

Albany
Binghamton
Buffalo
Stony Brook

University Colleges

Brockport
Buffalo
Cortland
Fredonia
Geneseo
New Paltz
Old Westbury
Oneonta
Oswego
Plattsburgh
Potsdam
Purchase

Health Sciences Centers

Brooklyn
Syracuse

Specialized Colleges

Maritime
Utica/Rome

**Colleges of Technology/
Agriculture**

Alfred
Canton
Cobleskill
Delhi
Farmingdale
Morrisville

INTRODUCTION

The methodology and definitions used in this study have been developed to be consistent with the State University of New York Policies and Procedures Manual. Definitions of the basic concepts used in this report are provided beginning on page xiii.

A general policy change occurred in University management of residence halls between 1985 and 1986. One manifestation of the change is the restructuring of dormitory fiscal operations into a Dormitory Income Fund Reimbursable (DIFR) structure. Accompanying this new structure is a series of alterations in rate setting and revenue generation:

1. The concept of a single University-wide standard double room rate has been replaced by the acceptance of institution-specific standard double room rates, which must fall within a specified range of the average of standard double room rates for all of the State-operated institutions of the State University of New York.
2. The ratio of superior and reduced rates to the standard double rate is now at the discretion of each institution, pending approval from System Administration.
3. The algorithm to calculate the number of allowable Resident Assistant waivers has been greatly simplified. The RA factor concept has been discontinued, and an acceptable range of RA waivers from 4% to 6% of resident student occupancy (headcount) is now in effect.
4. It is now permissible to place lodgings into an inactive status under certain conditions.

For information about the policy, refer to the *Dormitory Income Fund Reimbursable (DIFR) Guidelines* published in November 1987 by the State University of New York Office of Finance and Business.

Three tables have been designed to provide supporting information to evaluate the effect of these policy initiatives on the utilization of residence halls. Table 5, *Utilization of Net Revenue Producing Adjusted Design Capacity by Rate*, shows the schedule of rates developed by each institution as of Fall 1994, as well as the occupancy of facilities at each rate. Tables 6 and 7 deal with Resident Assistant Bed Rental Waivers, showing the distribution and accepted range of bed rental waivers. Increased variability in the ratios of Resident Assistant Bed Rental Waivers to headcount (for example, .67 beds per resident assistant rather than the more usual one to one or two to one) has resulted in Table 6 in the grouping of the more unusual ratios into categories.

The report contains seven tables of data for Fall 1994:

Table 1 presents aggregated data which describe the original design capacity of the residence hall facilities, the permanent and temporary adjustments to this original capacity, net revenue producing capacity and percent of actual utilization.

Table 2 provides more detailed data concerning the types of utilization of net revenue producing capacity depicted in Table 1. Resident student utilization and other types of utilization are arrayed in categories as described in the column headings.

Table 3 focuses on resident student utilization summarized in Table 2. Data are arrayed by institution, type of accommodation and rate paid by the students.

Table 4 describes revenue-producing utilization of residence halls for other than student occupancy. Net utilization of each campus is arrayed with "other uses" data to clarify the relationship between amount of space available and "other" revenue-generating effort. "Other uses" data are arrayed within each category by bedcount, headcount, and percent of revenue generated.

Table 5 arrays the utilization of net revenue producing adjusted design capacity by rate. For each institution, revenue-producing utilization is shown in total and then detailed along with the associated rates charged in Fall 1994. The categories show utilization by non-married enrolled students; that of students accommodated as married; and other revenue-producing utilization. Also, the bedcount of unoccupied rooms, suites or apartments is shown for facilities with resident student utilization.

Table 6 displays, by institution, the distribution of Resident Assistant Bed Rental Waivers in terms of bedcount (actual number of bed rentals waived) and headcount (number of Resident Assistants). Included are ratios of bedcount to headcount. Due to an increase in unusual ratios, they are now grouped into the following categories: two to one; 1.01 - 1.99 to one; one to one; .60 - .99 to one; and .59 or less to one. By far the most common ratios are still two to one and one to one.

Table 7 augments Table 6 and displays total resident student occupancy, the authorized range of bed rental waivers--from four percent to six percent of the total resident student occupancy--and the total of fractional and whole bed rental waivers. Finally, the number of students per Resident Assistant is shown for each institution and overall.

Tables 8 through 12 depict trends concerning utilization of residence hall facilities from Fall 1985 through Fall 1994:

Table 8, total utilization (headcount); **Table 9**, percent utilization; **Table 10**, non-revenue assignments; **Table 11**, revenue producing utilization for purposes other than resident student occupancy (bedcount); and **Table 12**, the ratio of students to resident assistants. The definitions over the ten-year period are consistent with those described beginning on page xiii.

SUMMARY OF DATA

In the Fall of 1994, the total current utilization of residence hall facilities (headcount) was reported to be 58,054. This was the fourth consecutive year in which total utilization declined. The Fall 1994 level of occupancy represented the smallest total utilization (headcount) in the past ten years and a nine percent decrease from the ten-year peak which occurred in Fall 1988.

Summary of Utilization of Original Design Capacity of Residence Hall Facilities, State-Operated Institutions, State University of New York, Fall 1985 through Fall 1994

Year	Original Design Capacity (Bedcount)	Net Revenue Producing Adjusted Design Capacity (Bedcount)	Total Utilization (Headcount)	Percent Utilization of Net Revenue Producing Adjusted Design Capacity
Fall 1985	68,432	62,737	61,701	98.3
Fall 1986	68,432	62,488	61,506	98.5
Fall 1987	68,427	62,313	62,703	100.6
Fall 1988	68,837	63,141	63,957	101.3
Fall 1989	68,837	62,668	62,039	99.0
Fall 1990	68,951	62,438	62,324	99.8
Fall 1991	70,015	62,713	60,672	96.7
Fall 1992	70,015	61,869	59,211	95.7
Fall 1993	70,003	61,340	58,857	96.0
Fall 1994	70,003	60,600	58,054	95.8

The Fall 1994 net revenue producing adjusted design capacity (bedcount) also decreased from the prior year to 60,600. The occupancy level (95.8%) was marginally below the Fall 1993 utilization rate (96.0%) and was the second lowest level recorded in the past ten years.

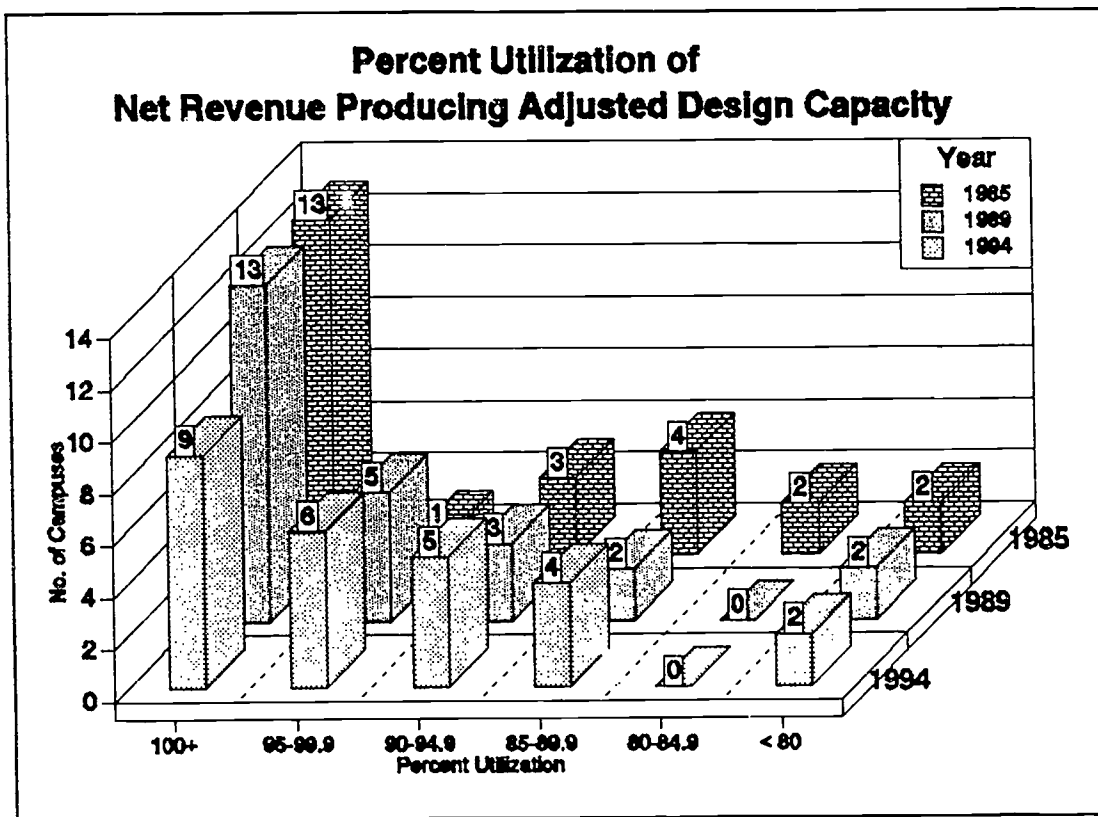
The trend data show that in four of the six years through Fall 1991, revenue producing utilization of residence halls for purposes other than resident student occupancy increased (see Table 11). Fall 1986 and Fall 1989 each showed a decrease from the immediately prior year.

Fall 1992 marked the first of three consecutive decreases in revenue producing utilization for purposes other than resident student occupancy. This is the only period in the past ten years when decreases occurred in more than a single year. The Fall 1994 level of revenue producing utilization for purposes other than resident student occupancy is similar to that of Fall 1987.

While there were some increases and decreases in the number of students per resident assistant for individual institutions, the average number of students per resident assistant for the system as a whole has remained relatively constant for the past ten years (see Tables 7 and 12). In Fall 1994 the average number of students per resident assistant for the system as a whole (25.7) represented a slight decrease from the Fall 1993 level of 26.0. The average level was similar to that of 25.6 in Fall 1987 and Fall 1988. The overall stability in students per Resident Assistant compared to the prior year reflected a lower ratio in most sectors partially balanced by increases in Specialized Colleges and Colleges of Technology/Agriculture.

The percent utilization of net revenue producing adjusted design capacity was reported as 95.8 percent in the Fall of 1994 (see Tables 1 and 9 and Figure 2). This percent utilization was marginally lower than the Fall 1993 utilization of 96.0 percent. For the third consecutive year, both the net revenue producing adjusted design capacity and the total utilization (headcount) decreased while their relationship remained relatively constant. The illustration on page xi shows how the distribution of percent utilization by number of campuses has varied for selected years within the past ten.

At the University Center at Binghamton, Fall 1994 percent utilization surpassed 100 percent, rising to 100.7 from 98.7 percent in Fall 1993. The other three University Centers declined from the prior year in percent utilization of net revenue producing adjusted design capacity (see Table 9). Albany and Buffalo showed headcount decreases while both Binghamton and Stony Brook had headcount increases (see Table 8). However, since Stony Brook also had fewer beds offline in Fall 1994 than in Fall 1993, percent utilization of net revenue producing adjusted design capacity decreased.



The Fall 1994 data reveal that the percent utilization of net revenue producing adjusted design capacity for the University Colleges decreased for the fourth consecutive year from the Fall 1990 ten-year peak of 100.8 percent. As in the prior year, the decrease from Fall 1993 to Fall 1994 was less than one percentage point. Five University Colleges increased in total utilization (headcount) while seven decreased. Of this group, only Geneseo and Old Westbury had higher utilization levels in Fall 1994 than in 1990.

The Fall 1994 data indicate that percent utilization at the Colleges of Technology/Agriculture increased from 96.0 percent in Fall 1993 to 103.8 percent (see Table 9), reversing the prior year's decline. However, the increase in percent utilization reflected decreases in both online accommodations and actual utilization (headcount). Compared to the prior year, in Fall 1994 there were 1,070 additional beds offline in Colleges of Technology/Agriculture residence halls. The resulting decrease in net revenue producing adjusted design capacity more than balanced a decline of some 400 in total utilization headcount (shown in Table 8). Fall 1994 marked the fifth consecutive annual decrease in total utilization for the sector; of the six colleges, only Alfred showed an increase.

Of the 26 institutions surveyed in Fall 1994, facilities at eight were over-utilized or crowded (utilizing more than 100 percent of capacity). These consisted of one University Center (Binghamton), three University Colleges (Cortland, Geneseo, and Old Westbury), and four Colleges of Technology/Agriculture (Canton, Cobleskill, Delhi and Morrisville). One Specialized College (the Institute of Technology at Utica/Rome) was exactly at capacity.

Facilities at the remaining seventeen institutions were under-utilized (showed a negative net utilization). Ten of the seventeen were able to generate revenue through utilization other than student occupancy. Based on projected revenues assigned to the Dormitory IFR for this year, one institution (Brockport), reported no estimated revenue generation for their "other utilization" facility. Percent of revenue generated for all "other utilizations", including the facility at Brockport, averaged 43.2 percent of the total possible student revenue generation, with a high of 100 percent and a low of zero (see Table 4).

DEFINITIONS

[Note: Terms in capital letters within the definitions are defined elsewhere in the section.]

Residential Capacity Descriptors

BEDCOUNT -- a unit of measure used to describe the capacity of the facility for residential purposes.

ORIGINAL DESIGN CAPACITY -- the original residential capacity of the facility (expressed as BEDCOUNT) as determined by architectural plans.

PERMANENT ADJUSTMENTS TO ORIGINAL DESIGN CAPACITY -- permanent conversions of on-campus facilities which increase or decrease their residential capacity (expressed as BEDCOUNT).

NON-REVENUE ASSIGNMENTS -- residential capacity (expressed as BEDCOUNT) exempted from revenue production for special uses such as for **RESIDENT ASSISTANTS**. These assignments are subject to annual review by System Administration.

NET REVENUE PRODUCING ADJUSTED DESIGN CAPACITY -- the capacity of the facility (expressed as BEDCOUNT) available for revenue producing uses. (ORIGINAL DESIGN CAPACITY, less NON-REVENUE ASSIGNMENTS, plus ADDITIONS OR DELETIONS TO ORIGINAL DESIGN.)

"SINGLE", "DOUBLE", "TRIPLE", ETC. -- refers to the DESIGN CAPACITY of the facility, NOT its level of occupancy. For example, a "TRIPLE" is NOT a crowded double, but a facility DESIGNED for three occupants.

Actual Occupancy/Use Descriptors

HEADCOUNT -- a measure of use which is the number of students or other persons occupying the facilities usually for residential purposes. Non-residential use of a facility, (e.g. office space) measured in terms of HEADCOUNT, is the number of students displaced by the use of the facility for other purposes.

RESIDENT STUDENT OCCUPANCY -- the HEADCOUNT of enrolled students and their spouses who reside in residence hall facilities. (This excludes RESIDENT ASSISTANTS.)

RESIDENT ASSISTANTS -- students assigned to and residing in residence hall facilities for the purpose of peer counseling and the betterment of the quality of life within the residence hall complex. The BEDCOUNT of facilities dedicated for RESIDENT ASSISTANT occupancy is exempted wholly or in part from revenue production.

OTHER USES -- uses of residence hall facilities for non-residential purposes such as office space or classrooms, or for residential use by students from other colleges or special non-student residential occupancy.

LEVEL OF OCCUPANCY -- **SUPERIOR** occupancy refers to a unit occupied at the election of the student(s) by fewer people than its design capacity; **STANDARD** describes occupancy at the exact level of a unit's design capacity; and **REDUCED** occupancy refers to a room occupied by more people, not at the election of the student(s), than its design capacity.

Utilization Indices

PERCENT OF REVENUE GENERATED -- FOR REVENUE-PRODUCING OTHER USES -- the estimated percent of revenue which this use will yield compared to what it would yield for regular student use at the given rate.

CURRENT UTILIZATION -- the total actual utilization (expressed as **HEADCOUNT**) of an occupied facility's available revenue producing capacity. This is the sum of total **RESIDENT STUDENT OCCUPANCY** and total **OTHER USES**.

NET UTILIZATION -- the **CURRENT UTILIZATION** less **NET REVENUE PRODUCING ADJUSTED DESIGN CAPACITY**. This figure is negative (-) if the facility is under-utilized and positive (+) if the facility is over-utilized.

PART ONE
DETAILED TABLES - FALL 1994

TABLE 1
UTILIZATION OF ORIGINAL DESIGN CAPACITY OF RESIDENCE HALL FACILITIES
STATE-OPERATED INSTITUTIONS, ① STATE UNIVERSITY OF NEW YORK, FALL, 1994

INSTITUTION	B E D C O U N T						TOTAL UTILIZATION HEADCOUNT	NET UTILIZATION	PCT UTILIZATION OF NET REVENUE PRODUCING ADJUSTED DESIGN CAPACITY	
	ORIGINAL DESIGN CAPACITY	PERMANENT ADJUSTMENTS	TEMPORARY ADJUSTMENTS AND OFFLINE	NON-REVENUE ASSIGNMENTS ②						NET REVENUE PRODUCING ADJUSTED DESIGN CAPACITY
				TOTAL	RESIDENT ASSISTANT WAIVERS	OTHER USES				
STATE-OPERATED INSTITUTIONS	70,003	(2,435)	(3,047)	3,921	2,928	993	60,600	58,054	(2,546)	95.8%
UNIVERSITY CENTERS	24,665	(14)	(1,055)	1,111	880	231	22,485	21,556	(929)	95.9%
ALBANY	6,683	13	(576)	212	190	22	5,908	5,248	(660)	88.8%
BINGHAMTON	4,912	5	-	282	260	22	4,635	4,667	32	100.7%
BUFFALO (INCLUDES HSC)	5,652	(4)	60	416	248	168	5,292	5,207	(85)	98.4%
STONY BROOK (INCLUDES HSC)	7,418 ④	(28)	(500)	201	182	19	6,650	6,434	(216)	96.8%
UNIVERSITY COLLEGES	33,504	(2,102)	(582)	2,110	1,624	486	28,710	27,027	(1,683)	94.1%
BROCKPORT	3,875	(1,016)	-	117	112	5	2,742	2,633	(109)	96.0%
BUFFALO	2,859	(515)	-	231	71	160	2,113	1,491	(622)	70.6%
CORTLAND	2,701	(14)	-	349	206	143	2,338	2,376	38	101.6%
FREDONIA	2,669	(48)	-	135	135	-	2,486	2,245	(241)	90.3%
GENESEO	3,195	(200)	-	174	174	-	2,821	3,010	189	106.7%
NEW PALTZ	2,573	(26)	-	280	138	142	2,267	2,207	(60)	97.4%
OLD WESTBURY	800	(8)	-	48	48	-	744	750	6	100.8%
ONEONTA	3,363	(26)	(452)	102	102	-	2,783	2,690	(93)	96.7%
OSWEGO	3,988	23	-	253	251	2	3,758	3,566	(192)	94.9%
PLATTSBURGH	2,924	(10)	-	147	147	-	2,767	2,500	(267)	90.4%
POTSDAM	2,937	(240)	(130)	202	178	24	2,365	2,084	(281)	88.1%
PURCHASE	1,620	(22)	-	72	62	10	1,526	1,475	(51)	96.7%
HEALTH SCIENCES CENTERS	1,016	(69)	-	304	28	276	643	533	(110)	82.9%
BROOKLYN	480	(51)	-	22	19	3	407	352	(55)	86.5%
SYRACUSE	536	(18)	-	282	9	273	236	181	(55)	76.7%
SPECIALIZED COLLEGES	1,300	-	17	33	33	-	1,284	1,174	(110)	91.4%
MARTIME INST. OF TECH. AT UTICA/ROME	900	-	-	21	21	-	879	769	(110)	87.5%
COLLEGES OF TECH/AGRIC.	400	-	17	12	12	-	405	405	0	100.0%
COLLEGES OF TECH/AGRIC.	9,518	(250)	(1,427)	363	363	0	7,478	7,764	286	103.8%
ALFRED	2,546	(5)	(299)	114	114	-	2,128	2,019	(109)	94.9%
CANTON	864	-	(144)	31	31	-	689	835	146	121.2%
COBLESKILL	1,845	(63)	(191)	77	77	-	1,514	1,517	3	100.2%
DELHI	1,238	-	-	50	50	-	1,188	1,241	53	104.5%
FARMINGDALE	1,133	(103)	(515)	29	29	-	486	450	(36)	92.6%
MORRISVILLE	1,892	(79)	(278)	62	62	-	1,473	1,702	229	115.5%

ALL FOOTNOTES APPEAR ON THE FOLLOWING PAGE

TABLE 1
UTILIZATION OF ORIGINAL DESIGN CAPACITY OF RESIDENCE HALL FACILITIES
STATE-OPERATED INSTITUTIONS, ① STATE UNIVERSITY OF NEW YORK, FALL 1994

Footnotes

- ① Excludes Empire State College, College of Environmental Science and Forestry, College of Optometry, and the Statutory Colleges
- ② As reported by each institution and including assignments pending review by System Administration, which is responsible for the approval of such assignments.
- ③ Net utilization equals current utilization less net revenue producing adjusted design capacity.
- ④ This figure represents a correction of the original design capacity for Stony Brook. Twelve design singles were previously listed as doubles.

Figure 1: Fall 1994 Utilization by Institution within Institution Type

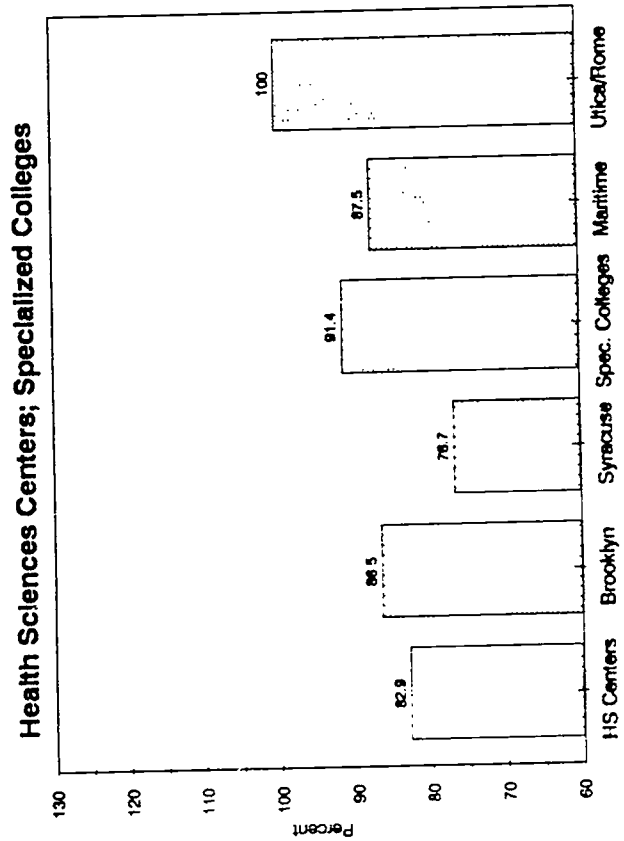
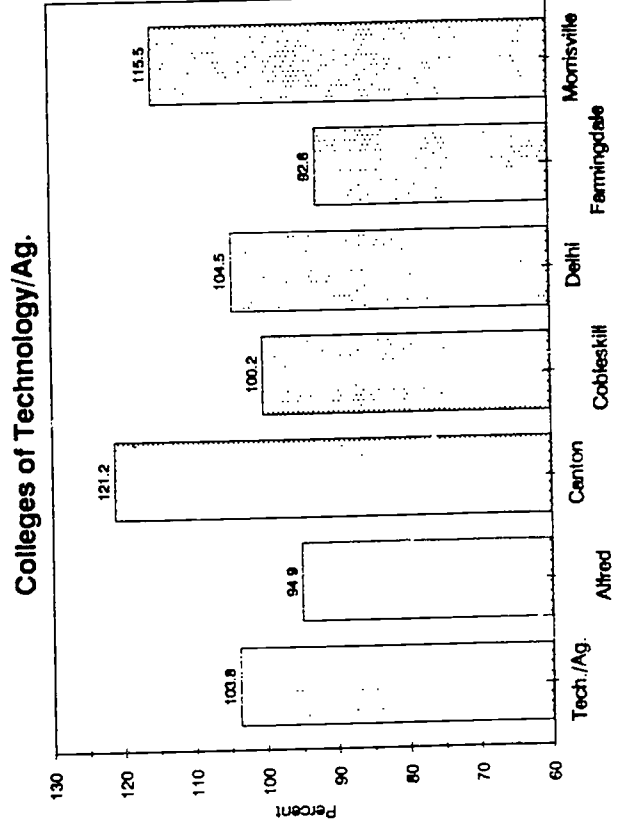
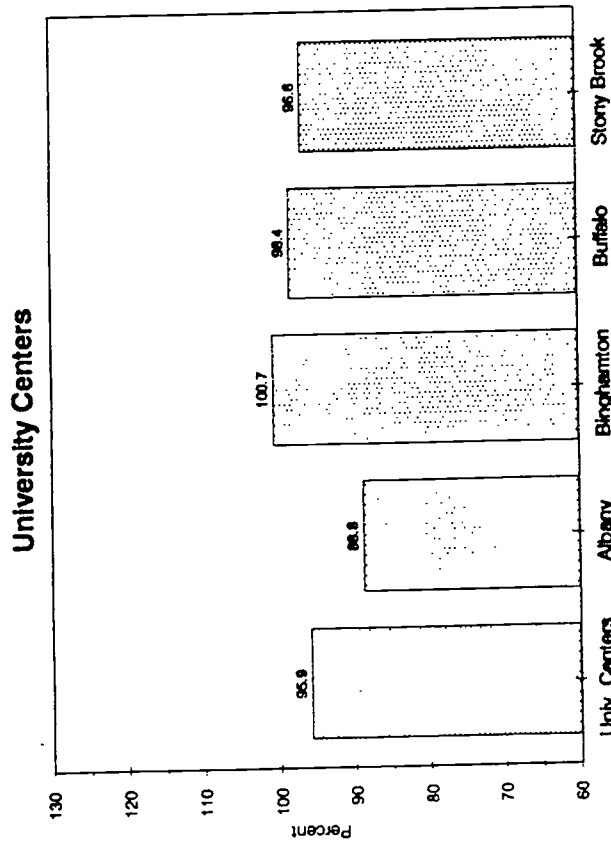
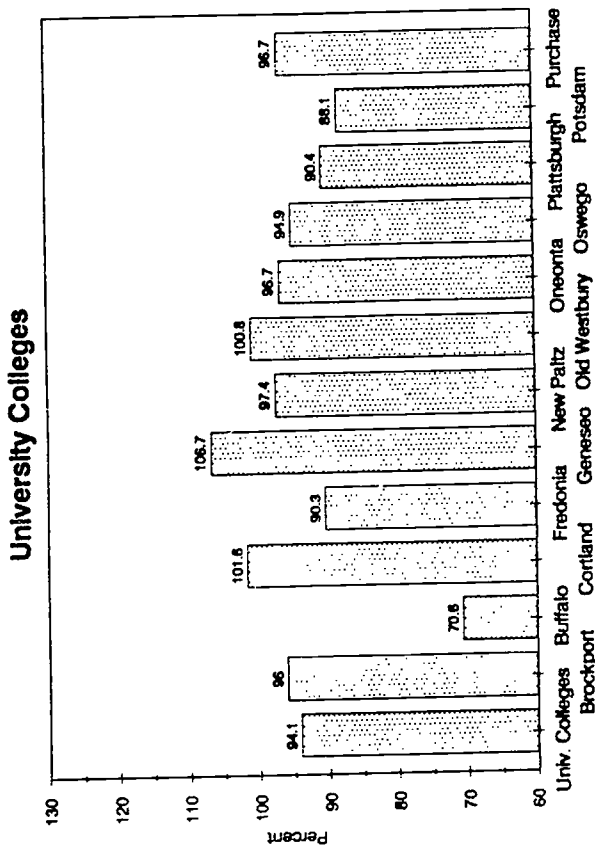


TABLE 2
UTILIZATION OF NET REVENUE PRODUCING ADJUSTED DESIGN CAPACITY
STATE-OPERATED INSTITUTIONS, STATE UNIVERSITY OF NEW YORK, FALL 1994

INSTITUTION	TOTAL		RESIDENT STUDENT OCCUPANCY		TOTAL		HOUSING FOR FACULTY, STAFF, OTHER		GUEST ROOMS, CONFERENCE CENTERS		ADMINISTRATIVE OFFICES, CLASSROOMS	
	HEAD-COUNT	BED-COUNT	HEAD-COUNT	BED-COUNT	HEAD-COUNT	BED-COUNT	HEAD-COUNT	BED-COUNT	HEAD-COUNT	BED-COUNT	HEAD-COUNT	BED-COUNT
STATE-OPERATED INSTITUTIONS	60,700	58,054	59,842	57,235	858	819	232	208	418	403	208	208
UNIVERSITY CENTERS	22,485	21,556	22,330	21,416	155	140	124	124	31	16	0	0
ALBANY	5,908	5,248	5,902	5,242	6	6	6	6	-	-	-	-
BINGHAMTON	4,635	4,667	4,635	4,667	-	-	-	-	-	-	-	-
BUFFALO (INCLUDES HSC)	5,292	5,207	5,252	5,182	40	25	9	9	31	16	-	-
STONY BROOK (INCLUDES HSC)	6,650	6,434	6,541	6,325	109	109	109	109	-	-	-	-
UNIVERSITY COLLEGES	28,710	27,027	28,167	26,484	543	543	54	54	387	387	102	102
BROCKPORT	2,742	2,633	2,541	2,432	201	201	-	-	201	201	-	-
BUFFALO	2,113	1,491	2,113	1,491	-	-	-	-	-	-	-	-
CORTLAND	2,338	2,376	2,338	2,376	-	-	-	-	-	-	-	-
FREDONIA	2,486	2,245	2,486	2,245	-	-	-	-	-	-	-	-
GENESEO	2,821	3,010	2,821	3,010	-	-	-	-	-	-	-	-
NEW PALTZ	2,267	2,207	2,267	2,207	-	-	-	-	-	-	-	-
OLD WESTBURY	744	750	744	750	-	-	-	-	-	-	-	-
ONEONTA	2,783	2,690	2,597	2,504	186	186	-	-	186	186	-	-
OSWEGO	3,758	3,566	3,758	3,566	-	-	-	-	-	-	-	-
PLATTSBURGH	2,767	2,500	2,713	2,446	54	54	54	54	-	-	-	-
POTSDAM	2,365	2,084	2,263	1,982	102	102	-	-	-	-	102	102
PURCHASE	1,526	1,475	1,526	1,475	0	0	-	-	-	-	-	-
HEALTH SCIENCES CENTERS	643	533	623	517	20	16	14	10	0	0	6	6
BROOKLYN	407	352	389	338	18	14	12	8	-	-	6	6
SYRACUSE	236	181	234	179	2	2	2	2	-	-	-	-
SPECIALIZED COLLEGES	1,284	1,174	1,144	1,054	140	120	40	20	0	0	100	100
MARITIME	879	769	739	649	140	120	40	20	-	-	100	100
INST. OF TECH. AT UTICA/ROME	405	405	405	405	-	-	-	-	-	-	-	-
COLLEGES OF TECH/AGRIC.	7,578	7,764	7,578	7,764	0	0	0	0	0	0	0	0
ALFRED	2,128	2,019	2,128	2,019	-	-	-	-	-	-	-	-
CANTON	689	835	689	835	-	-	-	-	-	-	-	-
COBLESKILL	1,514	1,517	1,514	1,517	-	-	-	-	-	-	-	-
DELHI	1,188	1,241	1,188	1,241	-	-	-	-	-	-	-	-
FARMINGDALE	486	450	486	450	-	-	-	-	-	-	-	-
MORRISVILLE	1,573	1,702	1,573	1,702	-	-	-	-	-	-	-	-

TABLE 2
UTILIZATION OF NET REVENUE PRODUCING ADJUSTED DESIGN CAPACITY
STATE-OPERATED INSTITUTIONS, ① STATE UNIVERSITY OF NEW YORK, FALL 1994

Footnotes

- ① Excludes Empire State College, College of Environmental Science and Forestry, College of Optometry, and the Statutory Colleges.
- ② Headcount is the same as net revenue producing adjusted design capacity because there are no under- or overutilization measures for these cases. The number of adjusted design capacity beds used for such purposes as Guest Rooms, Conference Centers, Administrative Office Space, Classrooms, Educational Programs, State Agencies, etc., is the same as the total possible number of persons (students) who are displaced by these "Other Utilization" arrangements.

95/1324 - 2
MSJ

25

SYSTEM ADMINISTRATION OFFICE OF
INSTITUTIONAL RESEARCH
STATE UNIVERSITY OF NEW YORK
SEPTEMBER 12, 1995

26

TABLE 3
STUDENT OCCUPANCY OF NET REVENUE PRODUCING ADJUSTED DESIGN CAPACITY
STATE-OPERATED INSTITUTIONS, ① STATE UNIVERSITY OF NEW YORK, FALL 1994

INSTITUTION AND TYPE OF ACCOMMODATION ④	RESIDENT STUDENT OCCUPANCY ②												UNOCCUPIED ACCOMMODATION BEDCOUNT
	TOTAL			RELATIVE RATE PAID						REDUCED			
				SUPERIOR		STANDARD							
	BEDCOUNT	HEADCOUNT		BEDCOUNT	HEADCOUNT	BEDCOUNT	HEADCOUNT	BEDCOUNT	HEADCOUNT	BEDCOUNT	HEADCOUNT		
STATE-OPERATED INSTITUTIONS	59,842	57,235	3,495	2,192	54,304	52,953	1,399	2,090	644				
SINGLES	3,075	2,533	518	292	2,472	2,241	0	0	85				
DOUBLES	37,981	36,657	2,096	1,403	34,344	33,617	1,091	1,637	450				
TRIPLES	1,555	1,584	3	2	1,501	1,514	51	68	0				
QUADRUPLES	6,397	5,833	400	247	5,762	5,377	144	209	91				
QUINTUPLES	1,731	1,615	180	90	1,518	1,491	23	34	10				
SEXTUPLES	7,287	6,885	266	135	6,933	6,636	80	114	8				
⑤ OTHER	1,816	2,128	32	23	1,774	2,077	10	28	0				
UNIVERSITY CENTERS	22,330	21,416	847	502	21,212	20,699	159	215	112				
SINGLES	674	650	3	2	671	648	0	0	0				
DOUBLES	10,899	10,740	108	76	10,725	10,589	51	75	15				
TRIPLES	1,189	1,163	0	0	1,138	1,095	51	68	0				
QUADRUPLES	3,852	3,393	342	218	3,409	3,149	22	26	79				
QUINTUPLES	1,398	1,302	176	88	1,189	1,180	23	34	10				
SEXTUPLES	3,810	3,584	216	110	3,574	3,462	12	12	8				
⑤ OTHER	508	584	2	8	506	576	0	0	0				
ALBANY	5,902	5,242	660	330	5,100	4,882	30	30	112				
SINGLES	0	0	0	0	0	0	0	0	0				
DOUBLES	660	604	42	21	600	580	3	3	15				
TRIPLES	0	0	0	0	0	0	0	0	0				
QUADRUPLES	1,754	1,382	242	121	1,419	1,247	14	14	79				
QUINTUPLES	1,216	1,112	174	87	1,031	1,024	1	1	10				
SEXTUPLES	2,272	2,144	202	101	2,050	2,031	12	12	8				
⑤ OTHER	0	0	0	0	0	0	0	0	0				
BINGHAMTON	4,635	4,667	38	26	4,519	4,524	78	117	0				
SINGLES	3	3	0	0	3	3	0	0	0				
DOUBLES	2,302	2,302	20	10	2,234	2,220	48	72	0				
TRIPLES	454	411	0	0	454	411	0	0	0				
QUADRUPLES	474	467	4	2	462	453	8	12	0				
QUINTUPLES	182	190	2	1	158	156	22	33	0				
SEXTUPLES	1,034	1,025	10	5	1,024	1,020	0	0	0				
⑤ OTHER	186	269	2	8	184	261	0	0	0				

TABLE 3
STUDENT OCCUPANCY OF NET REVENUE PRODUCING ADJUSTED DESIGN CAPACITY
STATE-OPERATED INSTITUTIONS, ① STATE UNIVERSITY OF NEW YORK, FALL 1994

INSTITUTION AND TYPE OF ACCOMMODATION ①	RESIDENT STUDENT OCCUPANCY ②										UNOCCUPIED ACCOMMODATION BEDCOUNT
	TOTAL		RELATIVE RATE PAID					REDUCED			
			SUPERIOR		STANDARD		HEADCOUNT				
			BEDCOUNT	HEADCOUNT	BEDCOUNT	HEADCOUNT					
BUFFALO (INCLUDES HSC)	5,252	5,182	101	98	5,100	5,016	51	68	0	0	0
SINGLES	451	445	3	2	448	443	0	0	0	0	0
DOUBLES	2,754	2,699	2	1	2,752	2,698	0	0	0	0	0
TRIPLES	735	752	0	0	684	684	51	68	0	0	0
QUADRUPLES	1,312	1,286	96	95	1,216	1,191	0	0	0	0	0
QUINTUPLES	0	0	0	0	0	0	0	0	0	0	0
SEXTUPLES	0	0	0	0	0	0	0	0	0	0	0
OTHER	0	0	0	0	0	0	0	0	0	0	0
STONY BROOK (INCLUDES HSC)	6,541	6,325	48	48	6,493	6,277	0	0	0	0	0
SINGLES	220	202	0	0	220	202	0	0	0	0	0
DOUBLES	5,183	5,135	44	44	5,139	5,091	0	0	0	0	0
TRIPLES	0	0	0	0	0	0	0	0	0	0	0
③ QUADRUPLES	312	258	0	0	312	258	0	0	0	0	0
QUINTUPLES	0	0	0	0	0	0	0	0	0	0	0
④ SEXTUPLES	504	415	4	4	500	411	0	0	0	0	0
⑤ OTHER	322	315	0	0	322	315	0	0	0	0	0
UNIVERSITY COLLEGES	28,167	26,484	2,515	1,623	24,277	23,583	928	1,278	447	12	423
SINGLES	1,288	867	481	273	795	594	0	0	0	0	0
DOUBLES	20,424	19,206	1,892	1,279	17,381	16,962	728	965	0	0	0
TRIPLES	138	133	0	0	138	133	0	0	0	0	0
QUADRUPLES	2,539	2,433	58	29	2,347	2,221	122	183	12	0	0
QUINTUPLES	333	313	4	2	329	311	0	0	0	0	0
SEXTUPLES	2,511	2,474	50	25	2,393	2,347	68	102	0	0	0
⑥ OTHER	934	1,058	30	15	894	1,015	10	28	0	0	0
BROCKPORT	2,541	2,432	44	41	2,411	2,391	0	0	86	0	0
SINGLES	43	43	38	38	5	5	0	0	0	0	0
DOUBLES	732	636	4	2	642	634	0	0	0	0	0
TRIPLES	0	0	0	0	0	0	0	0	0	0	0
QUADRUPLES	846	840	0	0	846	840	0	0	0	0	0
QUINTUPLES	200	196	0	0	200	196	0	0	0	0	0
SEXTUPLES	720	717	2	1	718	716	0	0	0	0	0
OTHER	0	0	0	0	0	0	0	0	0	0	0

ALL FOOTNOTES APPEAR ON THE LAST PAGE

TABLE 3
STUDENT OCCUPANCY OF NET REVENUE PRODUCING ADJUSTED DESIGN CAPACITY
STATE-OPERATED INSTITUTIONS, ① STATE UNIVERSITY OF NEW YORK, FALL 1984

INSTITUTION AND TYPE OF ACCOMMODATION ④	RESIDENT STUDENT OCCUPANCY ②										UNOCCUPIED ACCOMMODATION BEDCOUNT ③		
	TOTAL					RELATIVE RATE PAID							
	SUPERIOR		STANDARD		REDUCED		SUPERIOR		STANDARD			REDUCED	
	BEDCOUNT	HEADCOUNT	BEDCOUNT	HEADCOUNT	BEDCOUNT	HEADCOUNT	BEDCOUNT	HEADCOUNT	BEDCOUNT	HEADCOUNT		BEDCOUNT	HEADCOUNT
BUFFALO (COLLEGE)	2,113	1,491	1,033	863	628	0	0	0	0	0	0	182	
SINGLES	425	226	27	27	398	199	0	0	0	0	0	0	
DOUBLES	1,688	1,265	1,006	836	500	429	0	0	0	0	0	182	
TRIPLES	0	0	0	0	0	0	0	0	0	0	0	0	
QUADRUPLES	0	0	0	0	0	0	0	0	0	0	0	0	
QUINTUPLES	0	0	0	0	0	0	0	0	0	0	0	0	
SEXTUPLES	0	0	0	0	0	0	0	0	0	0	0	0	
OTHER	0	0	0	0	0	0	0	0	0	0	0	0	
CORTLAND	2,338	2,375	82	41	2,240	2,311	16	24	0	0	0	0	
SINGLES	22	20	0	0	22	20	0	0	0	0	0	0	
DOUBLES	2,283	2,239	82	41	2,185	2,174	16	24	0	0	0	0	
TRIPLES	33	33	0	0	33	33	0	0	0	0	0	0	
QUADRUPLES	0	0	0	0	0	0	0	0	0	0	0	0	
QUINTUPLES	0	0	0	0	0	0	0	0	0	0	0	0	
SEXTUPLES	0	0	0	0	0	0	0	0	0	0	0	0	
OTHER	0	84	0	0	0	84	0	0	0	0	0	0	
FREDONIA	2,486	2,245	416	208	2,037	2,037	0	0	0	0	0	33	
SINGLES	416	208	416	208	0	0	0	0	0	0	0	0	
DOUBLES	1,930	1,897	0	0	1,897	1,897	0	0	0	0	0	33	
TRIPLES	0	0	0	0	0	0	0	0	0	0	0	0	
QUADRUPLES	0	0	0	0	0	0	0	0	0	0	0	0	
QUINTUPLES	0	0	0	0	0	0	0	0	0	0	0	0	
SEXTUPLES	0	0	0	0	0	0	0	0	0	0	0	0	
OTHER	140	140	0	0	140	140	0	0	0	0	0	0	
GENESE0	2,821	3,010	14	7	2,415	2,415	392	588	0	0	0	0	
SINGLES	43	43	0	0	43	43	0	0	0	0	0	0	
DOUBLES	2,742	2,931	14	7	2,336	2,336	392	588	0	0	0	0	
TRIPLES	36	36	0	0	36	36	0	0	0	0	0	0	
QUADRUPLES	0	0	0	0	0	0	0	0	0	0	0	0	
QUINTUPLES	0	0	0	0	0	0	0	0	0	0	0	0	
SEXTUPLES	0	0	0	0	0	0	0	0	0	0	0	0	
OTHER	0	0	0	0	0	0	0	0	0	0	0	0	

ALL FOOTNOTES APPEAR ON THE LAST PAGE

TABLE 3
STUDENT OCCUPANCY OF NET REVENUE PRODUCING ADJUSTED DESIGN CAPACITY
STATE-OPERATED INSTITUTIONS, ① STATE UNIVERSITY OF NEW YORK, FALL 1994

INSTITUTION AND TYPE OF ACCOMMODATION ④	RESIDENT STUDENT OCCUPANCY ②										UNOCCUPIED ACCOMMODATION BEDCOUNT
	TOTAL		RELATIVE RATE PAID						REDUCED		
	BEDCOUNT	HEADCOUNT	SUPERIOR BEDCOUNT	HEADCOUNT	STANDARD BEDCOUNT	HEADCOUNT	REDUCED BEDCOUNT	HEADCOUNT	REDUCED BEDCOUNT	HEADCOUNT	
NEW PALTZ	2,267	2,207	76	38	2,152	2,052	39	117	0	0	0
SINGLES	13	13	0	0	13	13	0	0	0	0	0
DOUBLES	1,232	1,195	58	29	1,155	1,079	19	87	0	0	0
TRIPLES	0	0	0	0	0	0	0	0	0	0	0
QUADRUPLES	122	112	0	0	122	112	0	0	0	0	0
QUINTUPLES	0	0	0	0	0	0	0	0	0	0	0
SEXTUPLES	470	466	0	0	460	451	10	15	0	0	0
OTHER	430	421	18	9	402	397	10	15	0	0	0
OLD WESTBURY	744	750	0	0	732	732	12	18	0	0	0
SINGLES	158	158	0	0	158	158	0	0	0	0	0
DOUBLES	586	592	0	0	574	574	12	18	0	0	0
TRIPLES	0	0	0	0	0	0	0	0	0	0	0
QUADRUPLES	0	0	0	0	0	0	0	0	0	0	0
QUINTUPLES	0	0	0	0	0	0	0	0	0	0	0
SEXTUPLES	0	0	0	0	0	0	0	0	0	0	0
OTHER	0	0	0	0	0	0	0	0	0	0	0
ONEONTA	2,597	2,504	184	92	2,145	2,013	266	399	2	2	0
SINGLES	45	43	0	0	43	43	0	0	0	0	0
DOUBLES	854	796	112	56	656	611	86	129	0	0	0
TRIPLES	0	0	0	0	0	0	0	0	0	0	0
QUADRUPLES	1,003	967	44	22	837	762	122	183	0	0	0
QUINTUPLES	0	0	0	0	0	0	0	0	0	0	0
SEXTUPLES	695	698	28	14	609	597	58	87	0	0	0
OTHER	0	0	0	0	0	0	0	0	0	0	0
OSWEGO	3,758	3,566	116	58	3,526	3,487	10	21	106	8	0
SINGLES	8	0	0	0	0	0	0	0	0	0	0
DOUBLES	3,750	3,503	116	58	3,526	3,430	10	15	98	0	0
TRIPLES	0	0	0	0	0	0	0	0	0	0	0
QUADRUPLES	0	0	0	0	0	0	0	0	0	0	0
QUINTUPLES	0	0	0	0	0	0	0	0	0	0	0
SEXTUPLES	0	0	0	0	0	0	0	0	0	0	0
OTHER	0	63	0	0	0	57	0	6	0	0	0

TABLE 3
STUDENT OCCUPANCY OF NET REVENUE PRODUCING ADJUSTED DESIGN CAPACITY
STATE-OPERATED INSTITUTIONS, ① STATE UNIVERSITY OF NEW YORK, FALL 1994

INSTITUTION AND TYPE OF ACCOMMODATION ④	RESIDENT STUDENT OCCUPANCY ②										UNOCCUPIED ACCOMMODATION BEDCOUNT
	TOTAL		RELATIVE RATE PAID						REDUCED		
			SUPERIOR		STANDARD						
	BEDCOUNT	HEADCOUNT	BEDCOUNT	HEADCOUNT	BEDCOUNT	HEADCOUNT	BEDCOUNT	HEADCOUNT	BEDCOUNT	HEADCOUNT	
PLATTSBURGH	2,713	2,446	386	193	2,318	2,241	9	12	0	0	0
SINGLES	49	49	0	0	49	49	0	0	0	0	0
DOUBLES	2,664	2,397	386	193	2,269	2,192	9	12	0	0	0
TRIPLES	0	0	0	0	0	0	0	0	0	0	0
QUADRUPLES	0	0	0	0	0	0	0	0	0	0	0
QUINTUPLES	0	0	0	0	0	0	0	0	0	0	0
SEXTUPLES	0	0	0	0	0	0	0	0	0	0	0
OTHER	0	0	0	0	0	0	0	0	0	0	0
POTSDAM	2,263	1,982	164	82	1,895	1,801	184	99	20	2	
SINGLES	18	16	0	0	16	16	0	0	0	0	
DOUBLES	1,659	1,464	114	57	1,347	1,315	184	92	14	14	
TRIPLES	9	9	0	0	9	9	0	0	0	0	
QUADRUPLES	104	62	14	7	86	55	0	0	4	4	
QUINTUPLES	133	117	4	2	129	115	0	0	0	0	
SEXTUPLES	260	233	20	10	240	223	0	0	0	0	
OTHER	80	81	12	6	68	68	0	7	0	0	
⑤ ⑦	1,526	1,475	0	0	1,508	1,475	0	0	18	18	
PURCHASE	48	48	0	0	48	48	0	0	0	0	
SINGLES	304	291	0	0	294	291	0	0	10	10	
DOUBLES	60	55	0	0	60	55	0	0	0	0	
TRIPLES	464	452	0	0	456	452	0	0	8	8	
QUADRUPLES	0	0	0	0	0	0	0	0	0	0	
QUINTUPLES	366	360	0	0	366	360	0	0	0	0	
SEXTUPLES	284	269	0	0	284	269	0	0	0	0	
⑦	623	517	87	44	524	473	0	0	12	12	
HEALTH SCIENCES CENTERS	0	0	0	0	0	0	0	0	0	0	
SINGLES	584	480	84	42	488	438	0	0	12	12	
DOUBLES	33	30	3	2	30	28	0	0	0	0	
TRIPLES	6	7	0	0	6	7	0	0	0	0	
QUADRUPLES	0	0	0	0	0	0	0	0	0	0	
QUINTUPLES	0	0	0	0	0	0	0	0	0	0	
SEXTUPLES	0	0	0	0	0	0	0	0	0	0	
OTHER	0	0	0	0	0	0	0	0	0	0	

36

33

ALL FOOTNOTES APPEAR ON THE LAST PAGE

TABLE 3
STUDENT OCCUPANCY OF NET REVENUE PRODUCING ADJUSTED DESIGN CAPACITY
STATE-OPERATED INSTITUTIONS, ① STATE UNIVERSITY OF NEW YORK, FALL 1994

INSTITUTION AND TYPE OF ACCOMMODATION ④	RESIDENT STUDENT OCCUPANCY ②										UNOCCUPIED ③ ACCOMMODATION BEDCOUNT
	TOTAL			RELATIVE RATE PAID						REDUCED	
				SUPERIOR		STANDARD				REDUCED	
	BEDCOUNT	HEADCOUNT		BEDCOUNT	HEADCOUNT	BEDCOUNT	HEADCOUNT	BEDCOUNT	HEADCOUNT	BEDCOUNT	
BROOKLYN	389	338	4	2	373	336	0	0	0	0	12
SINGLES	0	0	0	0	0	0	0	0	0	0	0
DOUBLES	389	338	4	2	373	336	0	0	0	0	12
TRIPLES	0	0	0	0	0	0	0	0	0	0	0
QUADRUPLES	0	0	0	0	0	0	0	0	0	0	0
QUINTUPLES	0	0	0	0	0	0	0	0	0	0	0
SEXTUPLES	0	0	0	0	0	0	0	0	0	0	0
OTHER	0	0	0	0	0	0	0	0	0	0	0
SYRACUSE	234	179	83	42	151	137	0	0	0	0	0
SINGLES	0	0	0	0	0	0	0	0	0	0	0
DOUBLES	195	142	80	40	115	102	0	0	0	0	0
TRIPLES	33	30	3	2	30	28	0	0	0	0	0
QUADRUPLES	6	7	0	0	6	7	0	0	0	0	0
QUINTUPLES	0	0	0	0	0	0	0	0	0	0	0
SEXTUPLES	0	0	0	0	0	0	0	0	0	0	0
OTHER	0	0	0	0	0	0	0	0	0	0	0
SPECIALIZED COLLEGES	1,144	1,054	34	17	1,037	1,037	0	0	0	0	73
SINGLES	969	879	34	17	862	862	0	0	0	0	73
DOUBLES	106	106	0	0	106	106	0	0	0	0	0
TRIPLES	69	69	0	0	69	69	0	0	0	0	0
QUADRUPLES	0	0	0	0	0	0	0	0	0	0	0
QUINTUPLES	0	0	0	0	0	0	0	0	0	0	0
SEXTUPLES	0	0	0	0	0	0	0	0	0	0	0
OTHER	0	0	0	0	0	0	0	0	0	0	0
MARITIME	739	649	34	17	632	632	0	0	0	0	73
SINGLES	739	649	34	17	632	632	0	0	0	0	73
DOUBLES	0	0	0	0	0	0	0	0	0	0	0
TRIPLES	0	0	0	0	0	0	0	0	0	0	0
QUADRUPLES	0	0	0	0	0	0	0	0	0	0	0
QUINTUPLES	0	0	0	0	0	0	0	0	0	0	0
SEXTUPLES	0	0	0	0	0	0	0	0	0	0	0
OTHER	0	0	0	0	0	0	0	0	0	0	0



TABLE 3
STUDENT OCCUPANCY OF NET REVENUE PRODUCING ADJUSTED DESIGN CAPACITY
STATE-OPERATED INSTITUTIONS, ① STATE UNIVERSITY OF NEW YORK, FALL 1994

INSTITUTION AND TYPE OF ACCOMMODATION ④	RESIDENT STUDENT OCCUPANCY ②										UNOCCUPIED ACCOMMODATION BEDCOUNT	
	TOTAL		RELATIVE RATE PAID						REDUCED			
	BEDCOUNT	HEADCOUNT	SUPERIOR		STANDARD		REDUCED		BEDCOUNT	HEADCOUNT		
			BEDCOUNT	HEADCOUNT	BEDCOUNT	HEADCOUNT	BEDCOUNT	HEADCOUNT				
INST. OF TECH. AT UTICA/ROME	405	405	0	0	0	405	405	0	0	0	0	0
SINGLES	230	230	0	0	0	230	230	0	0	0	0	0
DOUBLES	106	106	0	0	0	106	106	0	0	0	0	0
TRIPLES	69	69	0	0	0	69	69	0	0	0	0	0
QUADRUPLES	0	0	0	0	0	0	0	0	0	0	0	0
QUINTUPLES	0	0	0	0	0	0	0	0	0	0	0	0
SEXTUPLES	0	0	0	0	0	0	0	0	0	0	0	0
OTHER	0	0	0	0	0	0	0	0	0	0	0	0
COLLEGES OF TECH/AGRIC.	7,578	7,764	12	6	6	7,254	7,161	312	597	0	0	0
SINGLES	144	137	0	0	0	144	137	0	0	0	0	0
DOUBLES	5,968	6,125	12	6	6	5,644	5,522	312	597	0	0	0
TRIPLES	126	189	0	0	0	126	189	0	0	0	0	0
QUADRUPLES	0	0	0	0	0	0	0	0	0	0	0	0
QUINTUPLES	0	0	0	0	0	0	0	0	0	0	0	0
SEXTUPLES	966	827	0	0	0	966	827	0	0	0	0	0
OTHER	374	486	0	0	0	374	486	0	0	0	0	0
ALFRED	2,128	2,019	0	0	0	2,128	2,019	0	0	0	0	0
SINGLES	10	10	0	0	0	10	10	0	0	0	0	0
DOUBLES	778	728	0	0	0	778	728	0	0	0	0	0
TRIPLES	0	0	0	0	0	0	0	0	0	0	0	0
QUADRUPLES	0	0	0	0	0	0	0	0	0	0	0	0
QUINTUPLES	0	0	0	0	0	0	0	0	0	0	0	0
SEXTUPLES	966	827	0	0	0	966	827	0	0	0	0	0
OTHER	374	454	0	0	0	374	454	0	0	0	0	0
CANTON	689	835	12	6	6	421	445	256	384	0	0	0
SINGLES	0	0	0	0	0	0	0	0	0	0	0	0
DOUBLES	689	835	12	6	6	421	445	256	384	0	0	0
TRIPLES	0	0	0	0	0	0	0	0	0	0	0	0
QUADRUPLES	0	0	0	0	0	0	0	0	0	0	0	0
QUINTUPLES	0	0	0	0	0	0	0	0	0	0	0	0
SEXTUPLES	0	0	0	0	0	0	0	0	0	0	0	0
OTHER	0	0	0	0	0	0	0	0	0	0	0	0

30

ALL FOOTNOTES APPEAR ON THE LAST PAGE

TABLE 3
STUDENT OCCUPANCY OF NET REVENUE PRODUCING ADJUSTED DESIGN CAPACITY
STATE-OPERATED INSTITUTIONS, ① STATE UNIVERSIT / OF NEW YORK, FALL 1994

INSTITUTION AND TYPE OF ACCOMMODATION ④	RESIDENT STUDENT OCCUPANCY ②										UNOCCUPIED ACCOMMODATION BEDCOUNT	
	TOTAL		RELATIVE RATE PAID						REDUCED			
	BEDCOUNT	HEADCOUNT	SUPERIOR		STANDARD		REDUCED		BEDCOUNT	HEADCOUNT		
			BEDCOUNT	HEADCOUNT	BEDCOUNT	HEADCOUNT	BEDCOUNT	HEADCOUNT				
COBLESKILL	1,514	1,517	0	0	1,514	1,517	0	0	0	0	0	0
SINGLES	24	24	0	0	24	24	0	0	0	0	0	0
DOUBLES	1,364	1,304	0	0	1,364	1,304	0	0	0	0	0	0
TRIPLES	126	189	0	0	126	189	0	0	0	0	0	0
QUADRUPLES	0	0	0	0	0	0	0	0	0	0	0	0
QUINTUPLES	0	0	0	0	0	0	0	0	0	0	0	0
SEXTUPLES	0	0	0	0	0	0	0	0	0	0	0	0
OTHER	0	0	0	0	0	0	0	0	0	0	0	0
DELHI	1,188	1,241	0	0	1,132	1,157	56	84	0	0	0	0
SINGLES	7	7	0	0	7	7	0	0	0	0	0	0
DOUBLES	1,181	1,202	0	0	1,125	1,118	56	84	0	0	0	0
TRIPLES	0	0	0	0	0	0	0	0	0	0	0	0
QUADRUPLES	0	0	0	0	0	0	0	0	0	0	0	0
QUINTUPLES	0	0	0	0	0	0	0	0	0	0	0	0
SEXTUPLES	0	0	0	0	0	0	0	0	0	0	0	0
OTHER	0	32	0	0	0	32	0	0	0	0	0	0
FARMINGDALE	486	450	0	0	486	450	0	0	0	0	0	0
SINGLES	80	73	0	0	80	73	0	0	0	0	0	0
DOUBLES	406	377	0	0	406	377	0	0	0	0	0	0
TRIPLES	0	0	0	0	0	0	0	0	0	0	0	0
QUADRUPLES	0	0	0	0	0	0	0	0	0	0	0	0
QUINTUPLES	0	0	0	0	0	0	0	0	0	0	0	0
SEXTUPLES	0	0	0	0	0	0	0	0	0	0	0	0
OTHER	0	0	0	0	0	0	0	0	0	0	0	0
MORRISVILLE	1,573	1,702	0	0	1,573	1,573	0	129	0	0	0	0
SINGLES	23	23	0	0	23	23	0	0	0	0	0	0
DOUBLES	1,550	1,679	0	0	1,550	1,550	0	129	0	0	0	0
TRIPLES	0	0	0	0	0	0	0	0	0	0	0	0
QUADRUPLES	0	0	0	0	0	0	0	0	0	0	0	0
QUINTUPLES	0	0	0	0	0	0	0	0	0	0	0	0
SEXTUPLES	0	0	0	0	0	0	0	0	0	0	0	0
OTHER	0	0	0	0	0	0	0	0	0	0	0	0

TABLE 3
STUDENT OCCUPANCY OF NET REVENUE PRODUCING ADJUSTED DESIGN CAPACITY
STATE-OPERATED INSTITUTIONS, ① STATE UNIVERSITY OF NEW YORK, FALL 1994

Footnotes

- ① Excludes Empire State College, College of Environmental Science and Forestry, College of Optometry, and the Statutory Colleges.
- ② If headcount exceeds bedcount, the accommodation is over-utilized or "crowded." If bedcount exceeds headcount, the accommodation is under-utilized.
- ③ Beds in completely unoccupied rooms, suites, or apartments.
- ④ Includes rooms, suites, and apartments.
- ⑤ Other types of accommodations including, but not limited to, space used as sleeping quarters not originally designed for that purpose. This includes lounges and study areas where the adjusted design capacity bedcount is zero and septuples and octuples with the appropriate adjusted design capacity bedcount.
- ⑥ Consists of converted lounge space where adjusted capacity bedcount is zero.
- ⑦ Consists of septuples and/or octuples with the appropriate adjusted design capacity bedcount.
- ⑧ Consists of two-bedroom apartments which were designed to accommodate four students.
- ⑨ Consists of three-bedroom apartments which were designed to accommodate six students.
 - a Consists of studio, one-bedroom, and four-bedroom apartments. One-bedroom and studio apartments are classified as "other," since these types of apartments were not specifically designed for student occupancy. They were originally designed as studios or one-bedroom apartments, and the design capacity varies based on the particulars of the facility.
 - b Consists of smaller rooms which, together, were designed as suites or apartments to accommodate six students.
 - c Consists of double rooms designed to accommodate two students, but also contain kitchen facilities.
 - d Consists of space used for sleeping quarters not originally designed for that purpose, where the adjusted design capacity bedcount is zero.
 - e Consists of converted study space where the adjusted design capacity bedcount is zero and of octuples consisting of smaller rooms which together were designed as suites to accommodate eight students.

TABLE 4
REVENUE-PRODUCING 'OTHER' UTILIZATION AND PERCENT OF REVENUE GENERATED
STATE-OPERATED INSTITUTIONS. ② STATE UNIVERSITY OF NEW YORK, FALL 1994

INSTITUTION	NET UTILIZATION ③	TOTAL OTHER USES				HOUSING FOR FACULTY STAFF, OTHER				GUEST ROOMS, CONFERENCE CENTERS				ADMINISTRATIVE OFFICES, CLASSROOMS			
		BEDCT	HEADCT	% OF ④ REVENUE	BEDCT	HEADCT	% OF ④ REVENUE	BEDCT	HEADCT	% OF ④ REVENUE	BEDCT	HEADCT	% OF ④ REVENUE	BEDCT	HEADCT	% OF ④ REVENUE	
																	BEDCT
STATE-OPERATED INSTITUTIONS	(2,546)	858	819	43.2 ⑤	232	208	90.0	418	403	13.5	208	208	33.7				
UNIVERSITY CENTERS	(929)	155	140	99.3	124	99.2	31	16	100.0	0	0						
ALBANY	(660)	6	6	100.0	6	100.0	-	-	-	-	-	-					
BINGHAMTON	32	-	-	-	-	-	-	-	-	-	-	-					
BUFFALO (INCLUDES HSC)	(85)	40	25	96.2	9	83.5	31	16	100.0	-	-	-					
STONY BROOK (INCLUDES HSC)	(216)	109	109	100.0	109	100.0	-	-	-	-	-	-					
UNIVERSITY COLLEGES	(1,683)	543	543	18.4	54	100.0	387	387	6.4	102	102	25.0					
BROCKPORT	(109)	201	201	0.0 ⑥	-	-	201	201	0.0	-	-	-					
BUFFALO (COLLEGE)	(622)	-	-	-	-	-	-	-	-	-	-	-					
CORTLAND	38	-	-	-	-	-	-	-	-	-	-	-					
FREDONIA	(241)	-	-	-	-	-	-	-	-	-	-	-					
GENESEO	189	-	-	-	-	-	-	-	-	-	-	-					
NEW PALTZ	(60)	-	-	-	-	-	-	-	-	-	-	-					
OLD WESTBURY	6	-	-	-	-	-	-	-	-	-	-	-					
ONEONTA	(83)	186	186	13.1	-	-	186	186	13.1	-	-	-					
OSWEGO	(192)	-	-	-	-	-	-	-	-	-	-	-					
PLATTSBURGH	(267)	54	54	100.0	54	100.0	-	-	-	-	-	-					
POTSDAM	(281)	102	102	25.0	-	-	-	-	-	102	102	25.0					
PURCHASE	(51)	-	-	-	-	-	-	-	-	-	-	-					
HEALTH SCIENCES CENTERS	(110)	20	16	100.0	14	100.0	0	0	0	6	6	100.0					
BROOKLYN	(55)	18	14	100.0	12	8	100.0	-	-	-	6	100.0					
SYRACUSE	(55)	2	2	100.0	2	2	100.0	-	-	-	-	-					
SPECIALIZED COLLEGES	(110)	140	120	35.9	40	27.4	0	0	0	100	100	39.3					
MARITIME	(110)	140	120	35.9	40	27.4	-	-	-	100	100	39.3					
INST. OF TECH AT UTICA/ROME	0	-	-	-	-	-	-	-	-	-	-	-					
COLLEGES OF TECH./AGRIC.	286	0	0	0.0	0	0.0	0	0	0	0	0	0					
ALFRED	(109)	-	-	-	-	-	-	-	-	-	-	-					
CANTON	146	-	-	-	-	-	-	-	-	-	-	-					
COBLESKILL	3	-	-	-	-	-	-	-	-	-	-	-					
DELHI	53	-	-	-	-	-	-	-	-	-	-	-					
FARMINGDALE	(36)	-	-	-	-	-	-	-	-	-	-	-					
MORRISVILLE	229	-	-	-	-	-	-	-	-	-	-	-					

ALL FOOTNOTES APPEAR ON THE FOLLOWING PAGE

TABLE 4
REVENUE - PRODUCING 'OTHER' UTILIZATION AND PERCENT OF REVENUE GENERATED ①
STATE - OPERATED INSTITUTIONS, ② STATE UNIVERSITY OF NEW YORK, FALL 1994

Footnotes

- ① See the DEFINITIONS section for a description of "percent of revenue generated."
- ② Excludes Empire State College, College of Environmental Science and Forestry, College of Optometry, and the Statutory Colleges
- ③ Net Utilization, derived in Table 1, is displayed here to facilitate comparison between under - utilization and amount of revenue - generating "other" utilization.
- ④ Total and subtotal percent columns are weighted averages.
- ⑤ Due to the current estimation of revenue generated for the Thompson Conference Center at Brockport (0%), this percent of revenue generated is substantially lower than it was several years ago.
- ⑥ While there are 201 beds assigned to Thompson Conference Center, the semester occupation varies substantially. Based on Fall 1994 estimates, there will not be any revenues assigned to the Dormitory IFR for 1994 - 94.

TABLE 5
UTILIZATION OF NET REVENUE PRODUCING ADJUSTED DESIGN CAPACITY BY RATE ①
STATE-OPERATED INSTITUTIONS. ② STATE UNIVERSITY OF NEW YORK, FALL 1994

INSTITUTION	TOTAL UTILIZATION		ENROLLED STUDENTS EXCEPT MARRIED				MARRIED STUDENTS				OTHER REVENUE USES			
	BEDCT	HEADCT	RATE CHARGED \$	BEDCT	HEADCT	UN-OCCUPIED	RATE CHARGED \$	BEDCT	HEADCT	UN-OCCUPIED	RATE CHARGED \$	BEDCT	HEADCT	
STONY BROOK (INCLUDES HSC)	6,650	6,434		6,073	5,913	0		468	412	0		109	109	
			2,166	44	44						1,733 ④	3	3	
			1,733	220	202						1,507 ④	20	20	
			1,507	5,139	5,091		990 b	24	24		990 ④, b	12	12	
							730 b	58	56					
							607 b	98	98		656 ④, b	6	6	
							495 b	288	234		607 ④, b	42	42	
			345 b	4	4						495 ④, b	12	12	
			326 b	166	161						326 ④, b	2	2	
			230 b	332	265						230 ④, b	8	8	
			217 b	168	146						217 ④, b	4	4	
UNIVERSITY COLLEGES	28,710	27,027		27,700	26,464	439		20	20	8		543	543	
BROCKPORT	2,742	2,633		2,455	2,432	86		0	0	0		201	201	
			2,070 ③	44	41									
			1,380	2,411	2,391	86					1,380 c	201	201	
BUFFALO (COLLEGE)	2,113	1,491		1,931	1,491	182		0	0	0		0	0	
			1,490	27	27									
			1,400	398	199									
			1,340	1,006	836	182								
			1,250	500	429									
CORTLAND	2,338	2,376		2,338	2,376	0		0	0	0		0	0	
			2,045 ③	82	41									
			1,705	22	20									
			1,375	2,218	2,291									
			1,238 ③	16	24									

52

ALL FOOTNOTES APPEAR ON THE LAST TWO PAGES

TABLE 5
 UTILIZATION OF NET REVENUE PRODUCING ADJUSTED DESIGN CAPACITY BY RATE ①
 STATE-OPERATED INSTITUTIONS, ② STATE UNIVERSITY OF NEW YORK, FALL 1994

INSTITUTION	TOTAL UTILIZATION		ENROLLED STUDENTS EXCEPT MARRIED					MARRIED STUDENTS					OTHER REVENUE USES			
	BEDCT	HEADCT	RATE CHARGED \$	BEDCT	HEADCT	UN-OCCUPIED	RATE CHARGED \$	BEDCT	HEADCT	UN-OCCUPIED	RATE CHARGED \$	BEDCT	HEADCT	RATE CHARGED \$	BEDCT	HEADCT
FREDONIA	2,486	2,245		2,453	2,245	33		0	0	0		0	0	0	0	0
			2,000 ③	32	16											
			1,750 ③	384	192											
			1,500	16	16											
			1,375 d	140	140											
			1,250	1,881	1,881	33										
GENESEO	2,821	3,010		2,821	3,010	0		0	0	0		0	0	0	0	0
			2,245 ③	14	7											
			1,310	842	842											
			1,285	1,078	1,078											
			1,260	388	388											
			1,230	107	107											
			1,025 ④	392	588											
NEW PALTZ	2,267	2,207		2,267	2,207	0		0	0	0		0	0	0	0	0
			2,040 ③	76	38											
			1,700	13	13											
			1,360	2,152	2,052											
			1,007 ⑤	26	104											
OLD WESTBURY	744	750		744	750	0		0	0	0		0	0	0	0	0
			1,704	158	158											
			1,492	574	574											
			995 ⑥	12	18											
ONEONTA	2,783	2,690		2,595	2,504	2		0	0	0		0	0	186	186	186
			2,170 ③	102	51											
			1,889 ③	82	41											
			1,808	43	43	2										
			1,534	1,531	1,437											
			1,439	571	533									1,439 •	186	186
			1,280 ⑦	180	270											
			1,187 ⑧	86	129											



TABLE 5
UTILIZATION OF NET REVENUE PRODUCING ADJUSTED DESIGN CAPACITY BY RATE ①
STATE-OPERATED INSTITUTIONS, ② STATE UNIVERSITY OF NEW YORK, FALL 1994

INSTITUTION	TOTAL UTILIZATION		ENROLLED STUDENTS EXCEPT MARRIED				MARRIED STUDENTS				OTHER REVENUE USES			
	BEDCT	HEADCT	RATE CHARGED \$	BEDCT	HEADCT	UN-OCCUPIED	RATE CHARGED \$	BEDCT	HEADCT	UN-OCCUPIED	RATE CHARGED \$	BEDCT	HEADCT	
OSWEGO	3,758	3,566		3,652	3,566	106		0	0	0	0	0	0	
			2,103 ③	116	58									
			1,515			8								
			1,415	3,526	3,487	98								
			1,265 ④	10	21									
PLATTSBURGH	2,767	2,500		2,713	2,446	0		0	0	0		54	54	
			1,604 ③	386	193									
			1,310	49	49									
			1,260	2,269	2,192						1,260 ④	54	54	
			865 ⑤	9	12									
POTSDAM	2,365	2,084		2,243	1,982	20		0	0	0		102	102	
			1,950 ③	164	82									
			1,450	431	401	4								
			1,425 f	200	115	2					1,425 g	102	102	
			1,400	66	58									
			1,375	1,350	1,318	14								
			725 h	32	8									
PURCHASE	1,526	1,475		1,488	1,455	10		20	20	8		0	0	
							3,180	20	20	8				
			1,820	180	180									
			1,685	48	48									
			1,620	494	486	8								
			1,495	706	686	2								
			1,350	60	55									
HEALTH SCIENCES CENTERS	643	533		576	480	12		35	37	0		20	16	
BROOKLYN	407	352		363	326	12		14	12	0		18	14	
							3,760	6	4					
							2,993	8	8					

58

55

ALL FOOTNOTES APPEAR ON THE LAST TWO PAGES

TABLE 5
UTILIZATION OF NET REVENUE PRODUCING ADJUSTED DESIGN CAPACITY BY RATE ①
STATE-OPERATED INSTITUTIONS. ② STATE UNIVERSITY OF NEW YORK, FALL 1994

INSTITUTION	TOTAL UTILIZATION		ENROLLED STUDENTS EXCEPT MARRIED				MARRIED STUDENTS				OTHER REVENUE USES			
	BEDCT	HEADCT	RATE CHARGED \$	BEDCT	HEADCT	UN-OCCUPIED	RATE CHARGED \$	BEDCT	HEADCT	UN-OCCUPIED	RATE CHARGED \$	BEDCT	HEADCT	
BROOKLYN (continued)			2,973 ③	4	2						2,230 ④	3	3	
			2,230	104	69	8					1,17 ④	9	5	
			1,487	165	165	4					1,202 ④	6	6	
			1,202	90	90									
SYRACUSE	236	181		213	154	0		21	25	0		2	2	
			3,009	3	2		3,009	6	7					
							2,742	5	7					
							2,370	10	11					
SPECIALIZED COLLEGES	1,284	1,174		1,071	1,054	73		0	0	0		140	120	
				666	649	73		0	0	0		140	120	
			2,830 ③	34	17						1,311 ④	2	2	
			1,415	632	632	73								
MARITIME	879	769												
				405	405	0		0	0	0		0	0	
			1,660	230	230						1,415 k	40	20	
			1,560	78	78						556 l	100	100	
INST. OF TECH. AT UTICA/ROME	405	405		405	405	0		0	0	0		0	0	
				7,578	7,764	0		0	0	0		0	0	
			1,660	230	230									
			1,560	78	78									
COLLEGES OF TECH./AGRIC.	7,578	7,764		7,578	7,764	0		0	0	0		0	0	
				2,128	2,019	0		0	0	0		0	0	
			1,675 m	0	46									
			1,565 m	0	45									
ALFRED	2,128	2,019		2,128	1,928			0	0	0		0	0	
			1,295	2,128	1,928									

ALL FOOTNOTES APPEAR ON THE LAST TWO PAGES

TABLE 5
 UTILIZATION OF NET REVENUE PRODUCING ADJUSTED DESIGN CAPACITY BY RATE ①
 STATE-OPERATED INSTITUTIONS, ② STATE UNIVERSITY OF NEW YORK, FALL 1994

INSTITUTION	TOTAL UTILIZATION		ENROLLED STUDENTS EXCEPT MARRIED				MARRIED STUDENTS				OTHER REVENUE USES			
	BEDCT	HEADCT	RATE CHARGED \$	BEDCT	HEADCT	UN-OCCUPIED	RATE CHARGED \$	BEDCT	HEADCT	UN-OCCUPIED	RATE CHARGED \$	BEDCT	HEADCT	
CANTON	689	835		689	835	0		0	0	0	0	0	0	
			2,114	0	6									
			1,409	689	445									
			1,309 ②	0	364									
COBLESKILL	1,514	1,517		1,514	1,517	0		0	0	0	0	0	0	
			1,700	24	24									
			1,450	1,364	1,304									
			1,325 ②	126	189									
DELHI	1,188	1,241		1,188	1,241	0		0	0	0	0	0	0	
			1,380	1,132	1,157									
			1,300 ②	54	81									
			1,280 ②	2	3									
FARMINGDALE	486	450		486	450	0		0	0	0	0	0	0	
			1,495	80	73									
			1,295	406	377									
MORRISVILLE	1,573	1,702		1,573	1,702	0		0	0	0	0	0	0	
			1,420	1,573	1,573									
			1,290 ②	0	129									

TABLE 5
UTILIZATION OF NET REVENUE PRODUCING ADJUSTED DESIGN CAPACITY BY RATE ①
STATE-OPERATED INSTITUTIONS. ② STATE UNIVERSITY OF NEW YORK, FALL 1994

Footnotes

- ① Unless otherwise indicated, rate shown is per occupant, not per dwelling, for one semester time period. Rates are those current as of Fall 1994.
- ② Excludes Empire State College, College of Environmental Science and Forestry, College of Optometry, and the Statutory Colleges
- ③ This is a superior rate charged students whenever a room or suite is occupied by fewer persons than the designed capacity, with such occupancy being at the request of the occupants and not resulting from room assignments by the college over which the student has no control.
- ④ This "other revenue" use represents an estimated revenue generation of 100% of the total possible standard revenue at this rate.
- ⑤ An approved bed rental rate for a single room type is charged to students occupying designed single rooms as well as to students occupying rooms and suites converted from lounge space.
- ⑥ An approved bed rental rate for a double room type is charged to students occupying designed double rooms as well as to students occupying rooms and suites converted from lounge space.
- ⑦ An approved bed rental rate for a triple room type is charged to students occupying designed triple rooms as well as to students occupying rooms and suites converted from lounge space.
- ⑧ Family apartments (numbering 25 in Fall 1994) are billed at a semester rate of \$2,910 regardless of the number of persons in residence.
- ⑨ This is a reduced semester rate offered to students when dormitory facilities are occupied by more persons than the design capacity, including situations of occupancy by students in facilities such as converted lounges, study rooms, etc.
- a This "other revenue" use represents a revenue generation of approximately 36% of the total possible standard revenue that could be generated from resident student occupancy at the \$1,748 rate.
- b These figures represent the rate per person per month.
- c This "other revenue" rate represents a potential semester rate of \$1,380 per person that could be generated from student occupancy of the Thompson Conference Center. However, there are currently no revenues that are anticipated to be assigned to the Dormitory IFR for that occupancy. Thus, the projected revenue generation is 0% of the total possible standard revenue at the \$1,380 rate.
- d This is a rate charged students occupying a double room with a kitchen.
- e This "other revenue" use represents an estimated annual revenue generation of 13% of the total possible standard revenue at the \$1,439 rate during the academic year. The 13% is based on annualized revenue projections of approximately \$70,000 for this alternate use facility as compared to the total possible student revenue of approximately \$535,308 generated during an academic year.
- f An approved bed rental rate for a double room type is charged to students occupying designed double rooms and also to students occupying medical singles, "built" singles and/or converted lounges.
- g This "other revenue" use represents a revenue generation of approximately 25% of a \$1,425 semester rate.
- h This is a bed rental rate charged to one person if the apartment is fully occupied (4 students/apt.) However, if only one person occupies an apartment, then the student is charged the full occupancy rate of \$2,900.
- i Married students are billed in this case for entire apartments at this semester rate regardless of the number of individuals occupying the apartments.
- j These figures were equated to a semester basis. The Fall rates (shown here) are less than the Spring rates because charges are actually on a monthly basis. There are fewer months (4 months payable) in the Fall semester.
- k This "other revenue" use represents an estimated annual revenue generation of 27% of the total possible standard revenue at this rate.

SYSTEM ADMINISTRATION OFFICE OF
INSTITUTIONAL RESEARCH
STATE UNIVERSITY OF NEW YORK
SEPTEMBER 14, 1995

TABLE 5
UTILIZATION OF NET REVENUE PRODUCING ADJUSTED DESIGN CAPACITY BY RATE ①
STATE-OPERATED INSTITUTIONS, ② STATE UNIVERSITY OF NEW YORK, FALL, 1994

Footnotes, continued...

- i This "other revenue" use represents an estimated annual revenue generation of 39% of the total possible standard revenue at the \$1,415 semester rate.
- m This is a situation where an approved bed rental rate for designed single rooms is being charged students who are occupying converted study rooms.

TABLE 6
DISTRIBUTION OF RESIDENT ASSISTANT BED RENTAL WAIVERS IN RESIDENCE HALL FACILITIES
STATE-OPERATED INSTITUTIONS, ① STATE UNIVERSITY OF NEW YORK, FALL 1994

INSTITUTION	TOTAL		2.0.0		1.0.1 TO 1.9.9		1.0.0		.6.0 TO .9.9		.5.9 OR LESS	
	BED RENTALS WAIVED	HEAD-COUNT	BED RENTALS WAIVED	HEAD-COUNT	BED RENTALS WAIVED	HEAD-COUNT	BED RENTALS WAIVED	HEAD-COUNT	BED RENTALS WAIVED	HEAD-COUNT	BED RENTALS WAIVED	HEAD-COUNT
STATE-OPERATED INSTITUTIONS	2,928	2,225	1,312	656	215	129	1,347	1,347	29	43	25	50
UNIVERSITY CENTERS	880	693	216	108	161	82	503	503	0	0	0	0
ALBANY	190	190	0	0	0	0	190	190	0	0	0	0
BINGHAMTON	260	152	216	108	0	0	44	44	0	0	0	0
BUFFALO (INCLUDES HSC)	248	169	0	0	161	82	87	87	0	0	0	0
STONY BROOK (INCLUDES HSC)	182	182	0	0	0	0	182	182	0	0	0	0
UNIVERSITY COLLEGES	1,624	1,085	1,080	540	35	33	505	505	2	3	2	4
BROCKPORT	112	91	42	21	0	0	70	70	0	0	0	0
BUFFALO (COLLEGE)	71	71	0	0	0	0	71	71	0	0	0	0
CORTLAND	206	116	182	91	0	0	22	22	2	3	0	0
FREDONIA	135	77	116	58	0	0	19	19	0	0	0	0
GENESEO	174	121	106	53	0	0	68	68	0	0	0	0
NEW PALTZ	138	69	138	69	0	0	0	0	0	0	0	0
OLD WESTBURY	48	48	0	0	0	0	48	48	0	0	0	0
ONEONTA	102	102	0	0	0	0	102	102	0	0	0	0
OSWEGO	251	141	216	108	35	33	0	0	0	0	0	0
PLATTSBURGH	147	92	110	55	0	0	37	37	0	0	0	0
POTSDAM	178	93	170	85	0	0	8	8	0	0	0	0
PURCHASE	62	64	0	0	0	0	60	60	0	0	2	4
HEALTH SCIENCES CENTERS	28	23	0	0	19	14	9	9	0	0	0	0
BROOKLYN	19	14	0	0	19	14	0	0	0	0	0	0
SYRACUSE	9	9	0	0	0	0	9	9	0	0	0	0
SPECIALIZED COLLEGES	33	54	0	0	0	0	12	12	0	0	21	42
MARITIME	21	42	0	0	0	0	0	0	0	0	21	42
INST. OF TECH. AT UTICA/ROME	12	12	0	0	0	0	12	12	0	0	0	0
COLLEGES OF TECH./AGRIC.	363	370	16	8	0	0	318	318	27	40	2	4
ALFRED	114	127	0	0	0	0	87	87	27	40	0	0
CANTON	31	31	0	0	0	0	31	31	0	0	0	0
COBLESKILL	77	77	0	0	0	0	77	77	0	0	0	0
DELI	50	52	0	0	0	0	48	48	0	0	2	4
FARMINGDALE	29	21	16	8	0	0	13	13	0	0	0	0
MORRISVILLE	62	62	0	0	0	0	62	62	0	0	0	0

ALL FOOTNOTES APPEAR ON THE FOLLOWING PAGE

TABLE 6
DISTRIBUTION OF RESIDENT ASSISTANT BED RENTAL WAIVERS IN RESIDENCE HALL FACILITIES
STATE-OPERATED INSTITUTIONS, ① STATE UNIVERSITY OF NEW YORK, FALL 1994

Footnotes

- ① Excludes Empire State College, College of Environmental Science and Forestry, College of Optometry, and the Statutory Colleges
- ② The students shown here as Resident Assistants have received whole or partial bed rental waivers as indicated by the distribution of such waivers. These Resident Assistants perform a range of assignments which vary in type and degree of commitment. Therefore, the ratios shown here do not necessarily reflect differences in Resident Assistant services available to students.
- ③ The actual bed rental waived is .67.
- ④ The actual bed rental waived is 1.06.
- ⑤ The actual bed rental waived is 1.36.

TABLE 7
RESIDENT ASSISTANT BED RENTAL WAIVERS IN RESIDENCE HALL FACILITIES,
STATE-OPERATED INSTITUTIONS, ① STATE UNIVERSITY OF NEW YORK, FALL 1994

INSTITUTION	STUDENT OCCUPANCY	AUTHORIZED RANGE OF BED RENTAL WAIVERS ②		TOTAL OF FRACTIONAL AND WHOLE BED RENTAL WAIVERS	NUMBER OF STUDENTS PER RESIDENT ASSISTANT		
		HIGH (6% OF OCCUP)	LOW (4% OF OCCUP)			BED RENTALS WAIVED	HEADCOUNT ③
STATE-OPERATED INSTITUTIONS	57,235	3,435	2,290	2,928	25.7		
UNIVERSITY CENTERS	21,416	1,286	857	880	30.9		
ALBANY	5,242	315	210	190	27.6		
BINGHAMTON	4,667	280	187	260	30.7		
BUFFALO (INCLUDES HSC)	5,182	311	207	248	30.7		
STONY BROOK (INCLUDES HSC)	6,325	380	253	182	34.8		
UNIVERSITY COLLEGES	26,484	1,590	1,059	1,624	24.4		
BROOKPORT	2,432	146	97	112	26.7		
BUFFALO (COLLEGE)	1,491	89	60	71	21.0		
CORTLAND	2,376	143	95	206	20.5		
FREDONIA	2,245	135	90	135	29.2		
GENESEO	3,010	181	120	174	24.9		
NEW PALTZ	2,207	132	88	138	32.0		
OLD WESTBURY	750	45	30	48	15.6		
ONEONTA	2,504	150	100	102	24.5		
OSWEGO	3,566	214	143	251	25.3		
PLATTSBURGH	2,446	147	98	147	26.6		
POTSDAM	1,982	119	79	178	21.3		
PURCHASE	1,475	89	59	62	23.0		
HEALTH SCIENCES CENTERS	517	31	21	28	22.5		
BROOKLYN	338	20	14	19	24.1		
SYRACUSE	179	11	7	9	19.9		
SPECIALIZED COLLEGES	1,054	63	42	33	19.5		
MARITIME	649	39	26	21	15.5		
INST. OF TECH. AT UTICA/ROME	405	24	16	12	33.8		
COLLEGES OF TECH./AGRIC.	7,764	465	311	363	21.0		
ALFRED	2,019	121	81	114	15.9		
CANTON	835	50	33	31	26.9		
COBLESKILL	1,517	91	61	77	19.7		
DELHI	1,241	74	50	50	23.9		
FARMINGDALE	450	27	18	29	21.4		
MORRISVILLE	1,702	102	68	62	27.5		

ALL FOOTNOTES APPEAR ON THE FOLLOWING PAGE

TABLE 7
RESIDENT ASSISTANT BED RENTAL WAIVERS IN RESIDENCE HALL FACILITIES,
STATE-OPERATED INSTITUTIONS. ① STATE UNIVERSITY OF NEW YORK, FALL 1994

Footnotes

- ① Excludes Empire State College, College of Environmental Science and Forestry, College of Optometry, and the Statutory Colleges
- ② The setting of guidelines for authorized bed rental waivers has been changed by the Central Administration Office of Student Affairs and Special Programs to a concept of an authorized range rather than an algorithm based on a Resident Assistant factor. The range extends from 4% (low) to 6% (high) of the resident student occupancy (headcount). The resulting figures in these columns are thus measures of headcount.
- ③ The students shown here as Resident Assistants have received whole or partial bed rental waivers as indicated by distribution of such waivers. These Resident Assistants perform a range of assignments which vary in type and degree of commitment. Therefore, the ratios shown here do not necessarily reflect differences in Resident Assistant services available to students.

PART TWO
TRENDS
FALL 1985 - FALL 1994

TABLE 8
TOTAL UTILIZATION (HEADCOUNT) OF NET REVENUE PRODUCING ADJUSTED DESIGN CAPACITY OF RESIDENCE HALL FACILITIES
STATE-OPERATED INSTITUTIONS. ① STATE UNIVERSITY OF NEW YORK
FALL 1985 THRU FALL 1994

INSTITUTION	FALL 1985	FALL 1986	FALL 1987	FALL 1988	FALL 1989	FALL 1990	FALL 1991	FALL 1992	FALL 1993	FALL 1994
STATE-OPERATED INSTITUTIONS	61,701	61,506	62,703	63,957	62,039	62,324	60,672	59,211	58,857	58,054
UNIVERSITY CENTERS	22,360	22,678	22,433	22,646	21,205	21,741	21,746	21,330	21,659	21,556
ALBANY	6,052	6,209	6,196	6,493	5,730	6,115	6,084	5,660	5,288	5,248
BINGHAMTON	4,421	4,387	4,244	4,273	4,146	4,178	4,246	4,397	4,573	4,667
BUFFALO (INCLUDES HSC)	4,958	5,206	5,188	5,228	5,063	5,098	4,906	4,943	5,410	5,207
STONY BROOK (INCLUDES HSC)	6,929	6,876	6,805	6,652	6,266	6,350	6,510	6,330	6,388	6,434
UNIVERSITY COLLEGES	28,512	28,336	29,370	30,265	29,725	29,789	28,390	27,353	27,242	27,027
BROOKPORT	2,484	2,281	2,534	2,848	2,890	2,985	2,738	2,721	2,714	2,633
BUFFALO (COLLEGE)	1,804	1,853	1,844	1,863	1,980	2,008	1,803	1,790	1,556	1,491
CORTLAND	2,844	2,734	3,008	2,979	2,762	2,631	2,588	2,421	2,431	2,376
FREDONIA	2,139	2,191	2,249	2,339	2,362	2,363	2,242	2,122	2,221	2,245
GENESEO	3,195	3,069	3,004	3,047	2,931	2,987	2,926	2,907	2,935	3,010
NEW PALTZ	1,986	2,132	2,348	2,523	2,337	2,394	2,367	2,125	2,150	2,207
OLD WESTBURY	754	752	756	756	756	746	743	743	744	750
ONEONTA	2,982	2,974	3,078	3,193	3,030	2,953	2,684	2,670	2,540	2,690
OSWEGO	3,934	4,069	3,917	3,992	3,943	3,922	3,792	3,585	3,816	3,566
PLATTSBURGH	2,642	2,672	2,748	2,658	2,598	2,605	2,554	2,390	2,521	2,500
POTSDAM	2,284	2,086	2,230	2,377	2,468	2,492	2,355	2,300	2,161	2,084
PURCHASE	1,464	1,523	1,654	1,690	1,668	1,703	1,598	1,579	1,453	1,475
HEALTH SCIENCES CENTERS	697	719	729	715	666	723	710	574	563	533
BROOKLYN	360	372	365	375	377	377	372	369	359	352
SYRACUSE	337	347	364	340	289	346	338	205	204	181
SPECIALIZED COLLEGES	747	706	699	729	639	719	1,044	1,183	1,217	1,174
MARITIME	747	706	699	729	639	719	692	798	823	769
INST. OF TECH. AT UTICA/ROME	N/A	N/A	N/A	N/A	N/A	N/A	352	385	394	405
COLLEGES OF TECH./AGRIC.	9,385	9,067	9,472	9,602	9,804	9,352	8,782	8,771	8,176	7,764
ALFRED	2,330	2,187	2,188	2,404	2,427	2,206	2,071	2,041	1,898	2,019
CANTON	1,055	854	1,022	1,053	1,080	1,050	1,006	980	923	835
COBLESKILL	1,923	1,983	2,045	1,901	1,955	1,869	1,804	1,847	1,699	1,517
DELI	1,388	1,378	1,463	1,437	1,424	1,409	1,313	1,280	1,276	1,241
FARMINGDALE	869	834	828	897	941	869	745	664	514	450
MORRISVILLE	1,820	1,831	1,926	1,910	1,977	1,949	1,843	1,959	1,866	1,702

① Excludes Empire State College, College of Environmental Science and Forestry, College of Optometry, and the Statutory Colleges

SYSTEM ADMINISTRATION OFFICE OF
INSTITUTIONAL RESEARCH
STATE UNIVERSITY OF NEW YORK
SEPTEMBER 12, 1995

TABLE 9
PERCENT UTILIZATION OF NET REVENUE PRODUCING ADJUSTED DESIGN CAPACITY OF RESIDENCE HALL FACILITIES
STATE-OPERATED INSTITUTIONS, ① STATE UNIVERSITY OF NEW YORK
FALL 1985 THRU FALL 1994

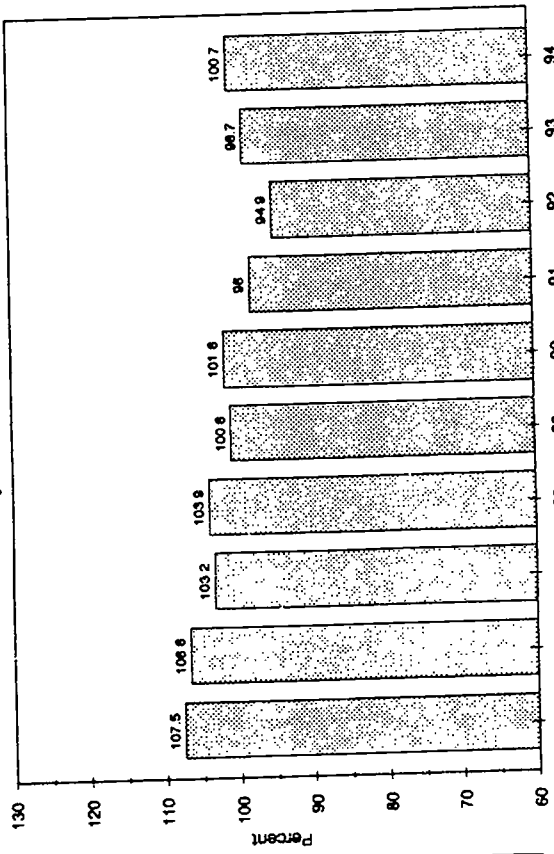
INSTITUTION	FALL 1985	FALL 1986	FALL 1987	FALL 1988	FALL 1989	FALL 1990	FALL 1991	FALL 1992	FALL 1993	FALL 1994
STATE-OPERATED INSTITUTIONS	98.3	98.5	100.6	101.3	99.0	99.8	96.7	95.7	96.0	95.8
UNIVERSITY CENTERS	103.1	102.7	101.1	100.6	94.9	97.3	95.6	93.2	97.4	95.9
ALBANY	102.7	102.5	101.7	100.0	88.3	95.8	94.1	87.6	89.2	88.8
BINGHAMTON	107.5	106.6	103.2	103.9	100.8	101.6	98.0	94.9	98.7	100.7
BUFFALO (INCLUDES HSC)	100.2	100.6	99.3	100.1	97.1	97.8	94.0	97.3	101.9	98.4
STONY BROOK (INCLUDES HSC)	102.9	102.1	100.9	99.6	95.8	95.6	96.8	94.3	100.2	96.8
UNIVERSITY COLLEGES	93.5	95.8	99.3	100.4	99.5	100.8	97.5	95.8	95.0	94.1
BROCKPORT	68.0	86.0	87.8	87.6	95.6	98.8	99.7	98.8	98.5	96.0
BUFFALO (COLLEGE)	80.7	83.0	88.5	89.7	95.5	97.1	86.4	85.6	73.7	70.6
CORTLAND	111.9	107.6	117.4	115.8	107.1	102.7	107.0	103.0	100.2	101.6
FREDONIA	92.2	96.1	98.5	97.9	95.3	95.3	90.2	88.8	91.9	90.3
GENESEO	113.9	109.0	106.7	108.1	104.0	106.2	103.6	103.0	103.9	106.7
NEW PALTZ	87.2	94.0	98.4	105.7	103.1	105.6	104.4	102.1	94.8	97.4
OLD WESTBURY	100.0	100.0	100.0	100.0	100.0	100.0	100.0	100.0	100.0	100.8
ONEONTA	92.7	92.4	95.7	99.3	94.2	97.7	88.9	95.8	91.3	96.7
OSWEGO	104.4	108.0	104.0	105.9	104.6	103.8	100.7	95.4	101.3	94.9
PLATTSBURGH	94.0	96.9	99.9	96.4	94.1	94.3	92.3	86.1	91.2	90.4
POTSDAM	83.7	75.6	87.6	90.9	94.3	99.5	94.4	92.6	93.1	88.1
PURCHASE	106.6	99.3	107.9	110.2	110.1	111.1	106.2	103.3	97.0	96.7
HEALTH SCIENCES CENTERS	79.7	63.2	85.0	83.5	79.6	86.0	84.5	88.0	87.7	82.9
BROOKLYN	85.7	91.0	89.2	89.3	89.8	89.8	87.9	87.9	88.2	86.5
SYRACUSE	74.1	76.3	81.1	78.0	69.3	82.2	81.1	88.4	86.8	76.7
SPECIALIZED COLLEGES	85.5	80.8	80.1	83.4	73.3	82.6	82.9	93.7	96.3	91.4
MARITIME	85.5	80.8	80.1	83.4	73.3	82.6	79.5	91.3	94.6	87.5
INST. OF TECH. AT UTICA/ROME	N/A	N/A	N/A	N/A	N/A	N/A	90.3	99.2	100.0	100.0
COLLEGES OF TECH./AGRIC.	106.0	100.0	107.5	109.6	112.3	106.0	100.4	103.2	96.0	103.8
ALFRED	97.2	85.1	86.5	99.6	100.9	91.4	85.4	84.3	78.2	94.9
CANTON	123.4	103.1	123.4	127.2	130.8	127.4	122.1	118.4	111.5	121.2
COBLESKILL	112.6	111.3	119.7	111.4	114.7	109.6	105.8	108.8	100.1	100.2
DELHI	117.9	117.1	124.3	122.1	121.0	119.7	111.6	108.2	107.9	104.5
FARMINGDALE	89.0	85.7	100.0	100.0	107.2	90.2	83.3	104.6	80.9	92.6
MORRISVILLE	104.6	105.2	110.6	109.7	113.6	112.1	107.0	112.7	107.0	115.5

① Excludes Empire State College, College of Environmental Science and Forestry, College of Optometry, and the Statutory Colleges

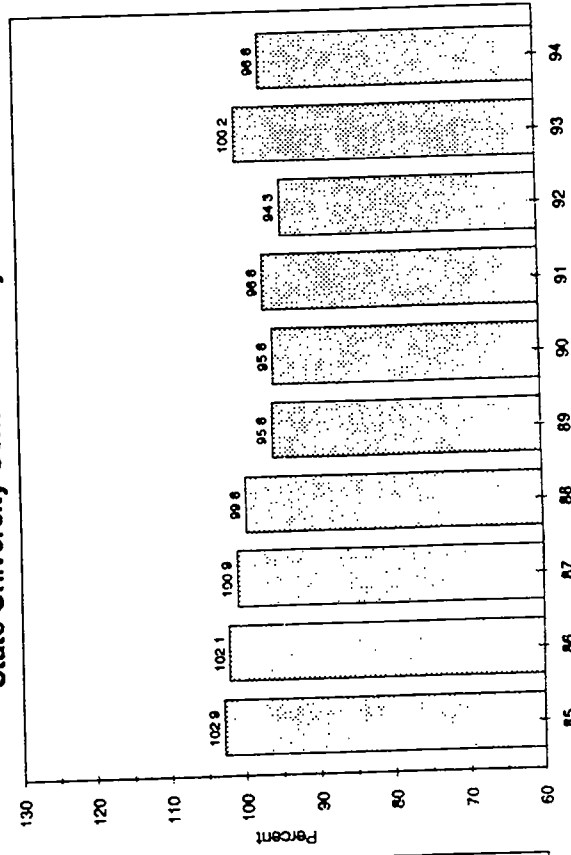
SYSTEM ADMINISTRATION OFFICE OF
INSTITUTIONAL RESEARCH
STATE UNIVERSITY OF NEW YORK
SEPTEMBER 12, 1995

Figure 2: Trends in Percent Utilization for Each Institution

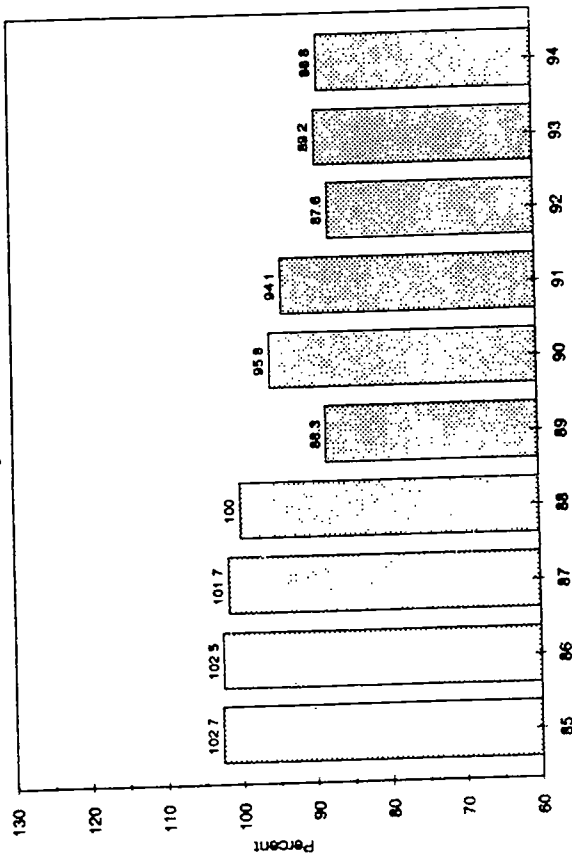
State University Center at Binghamton



State University Center at Stony Brook



State University Center at Albany



State University Center at Buffalo

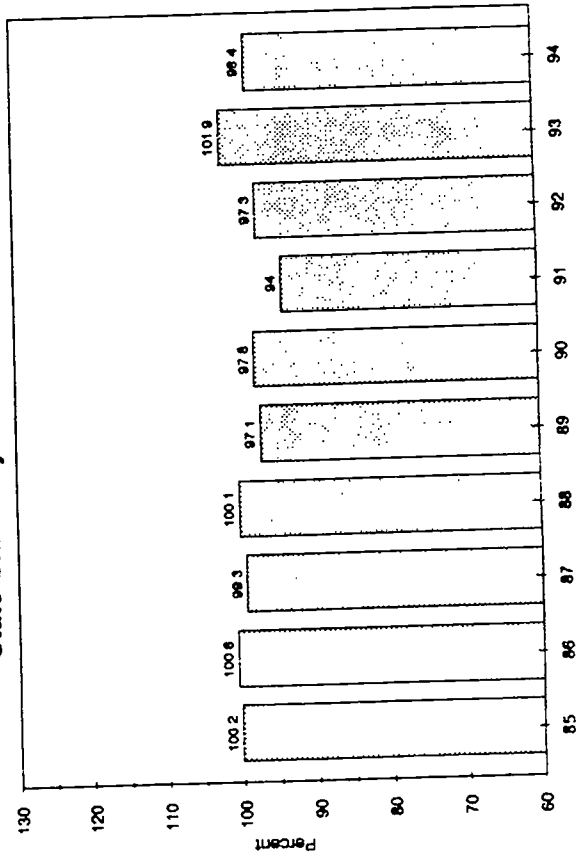
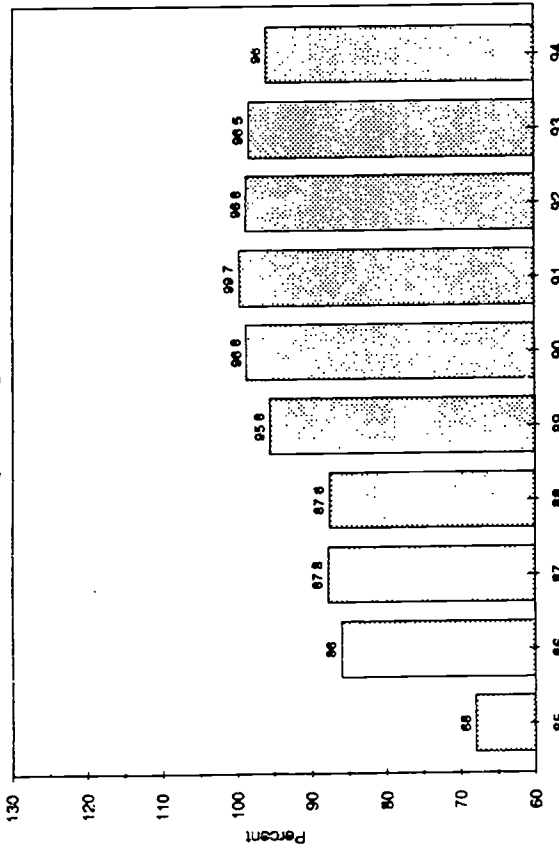
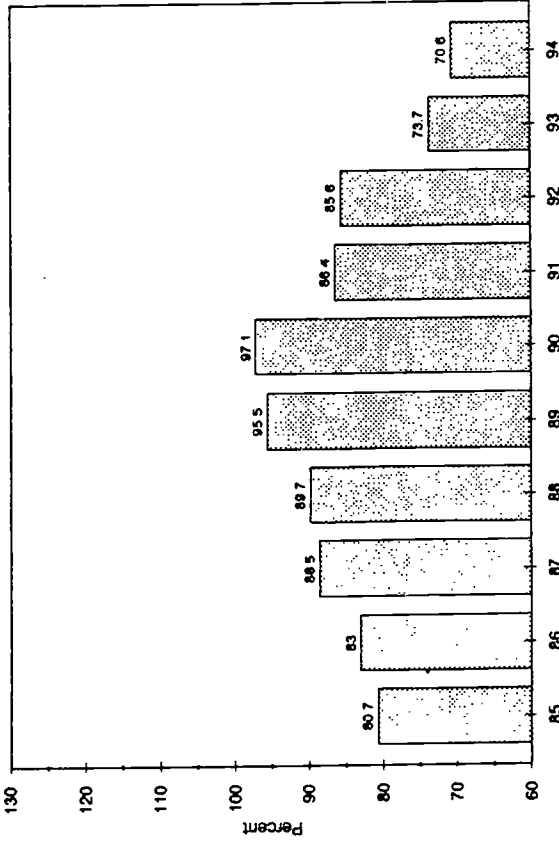


Figure 2: Trends in Percent Utilization for Each Institution

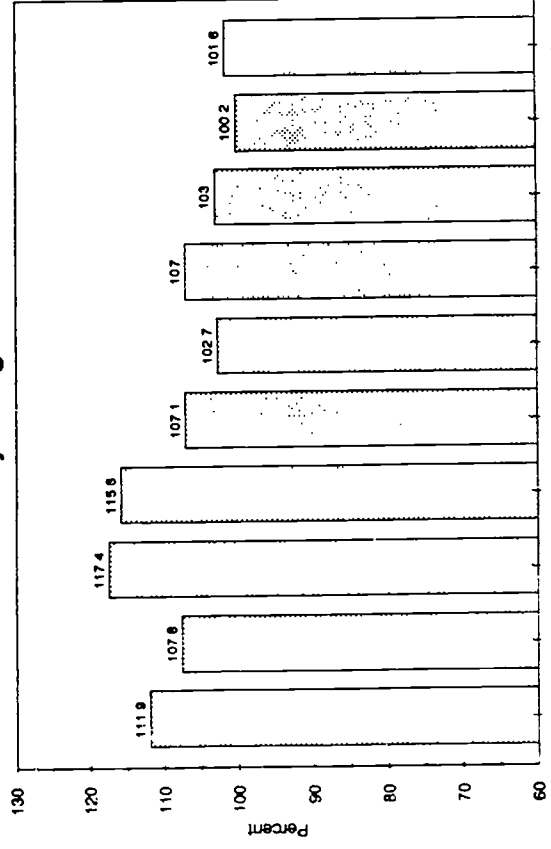
State University College at Brockport



State University College at Buffalo



State University College at Cortland



State University College at Fredonia

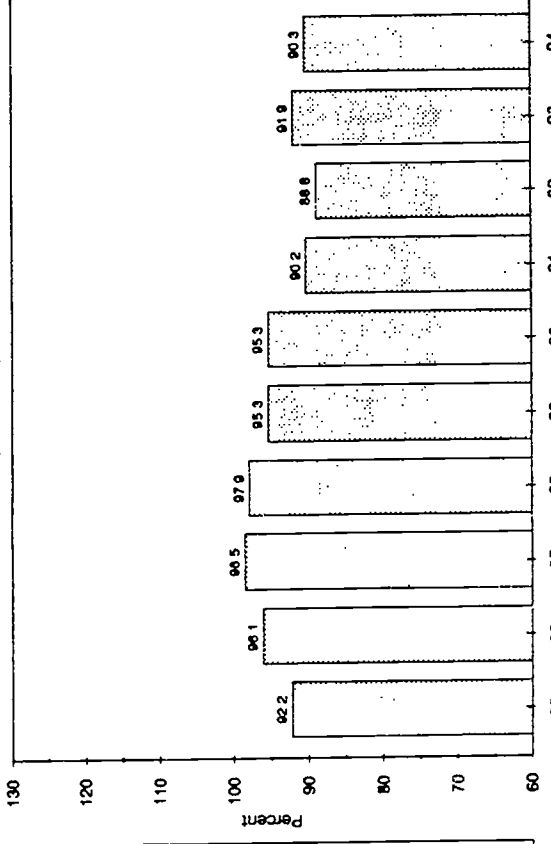


Figure 2: Trends in Percent Utilization for Each Institution

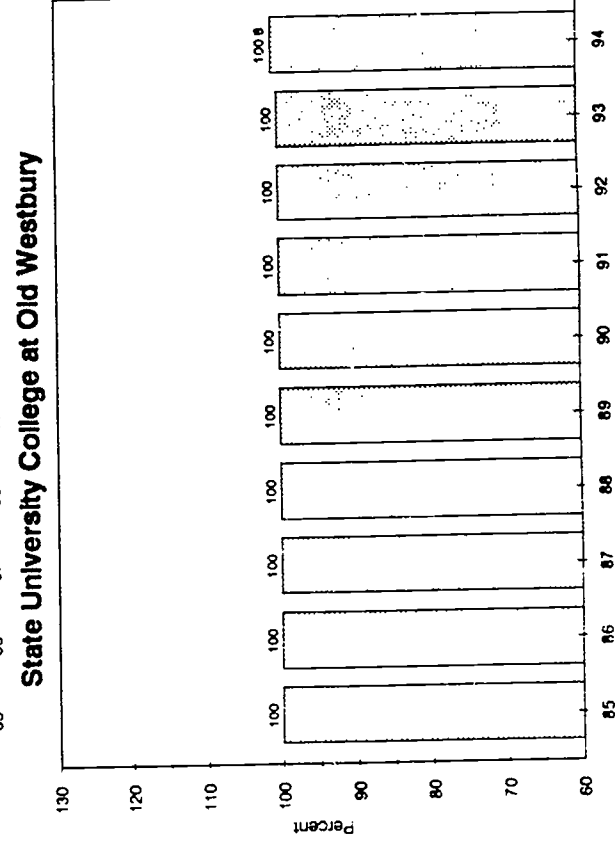
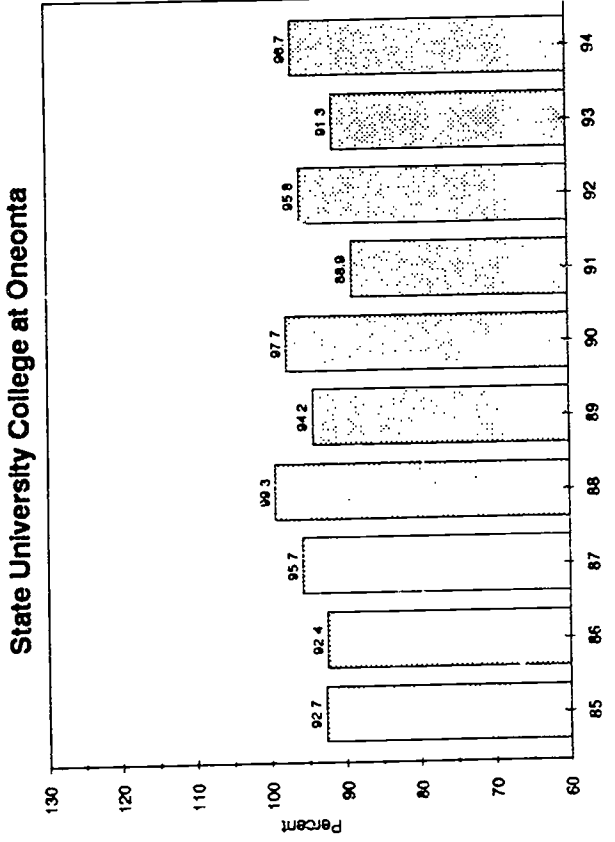
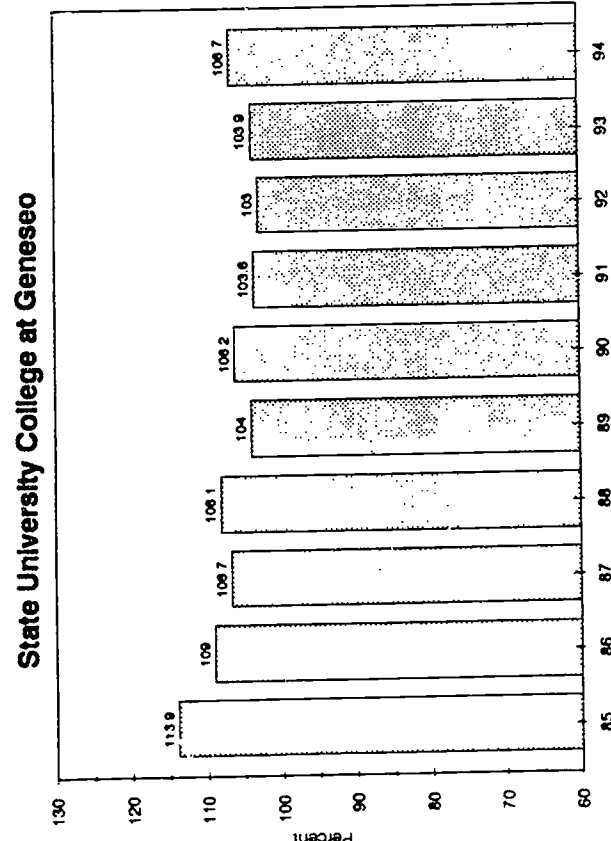
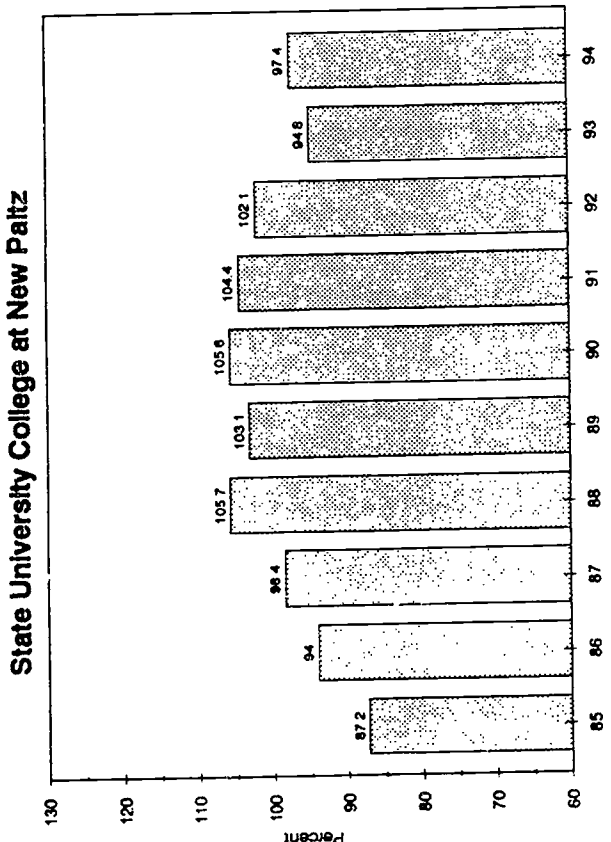


Figure 2: Trends in Percent Utilization for Each Institution

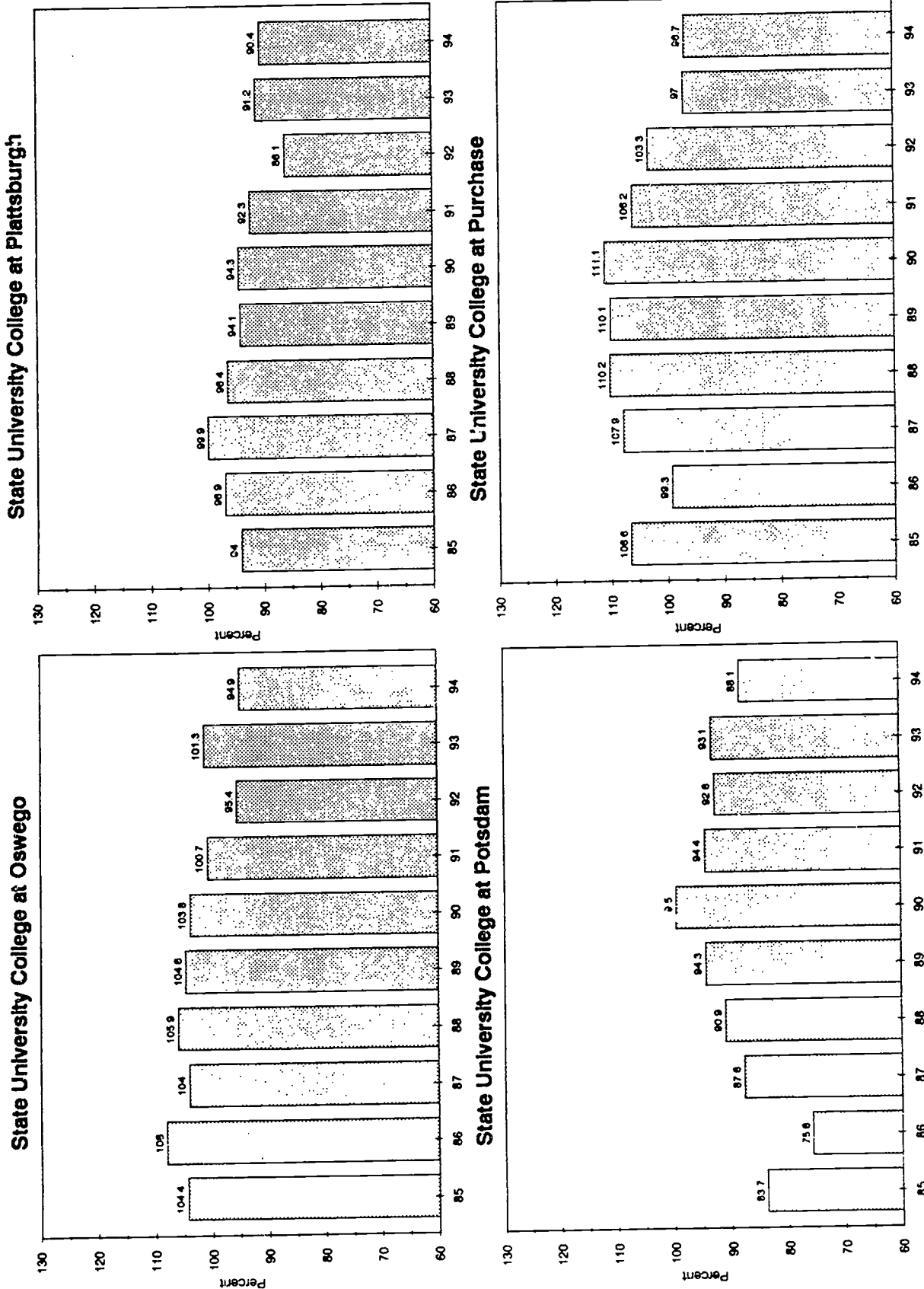


Figure 2: Trends in Percent Utilization for Each Institution

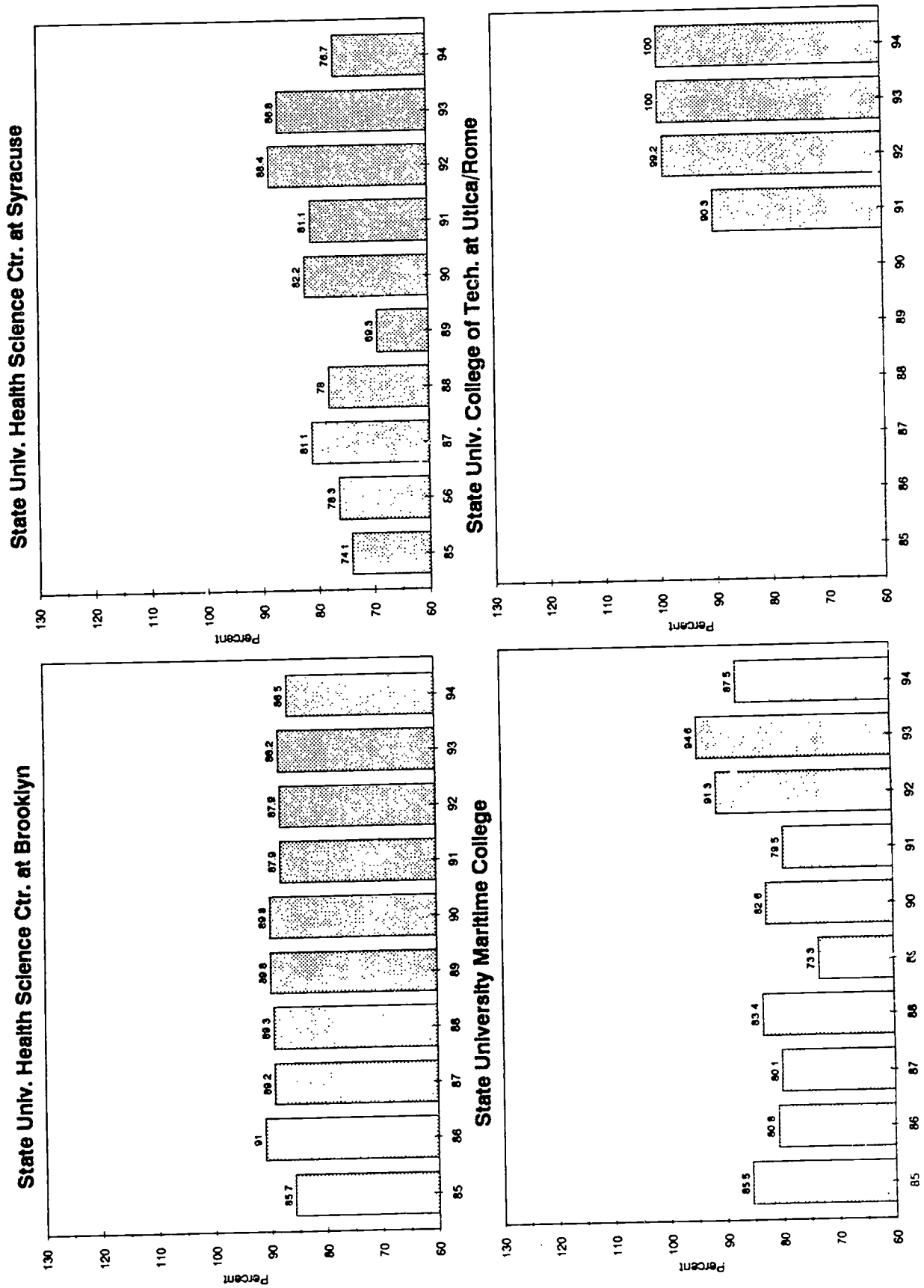


Figure 2: Trends in Percent Utilization for Each Institution

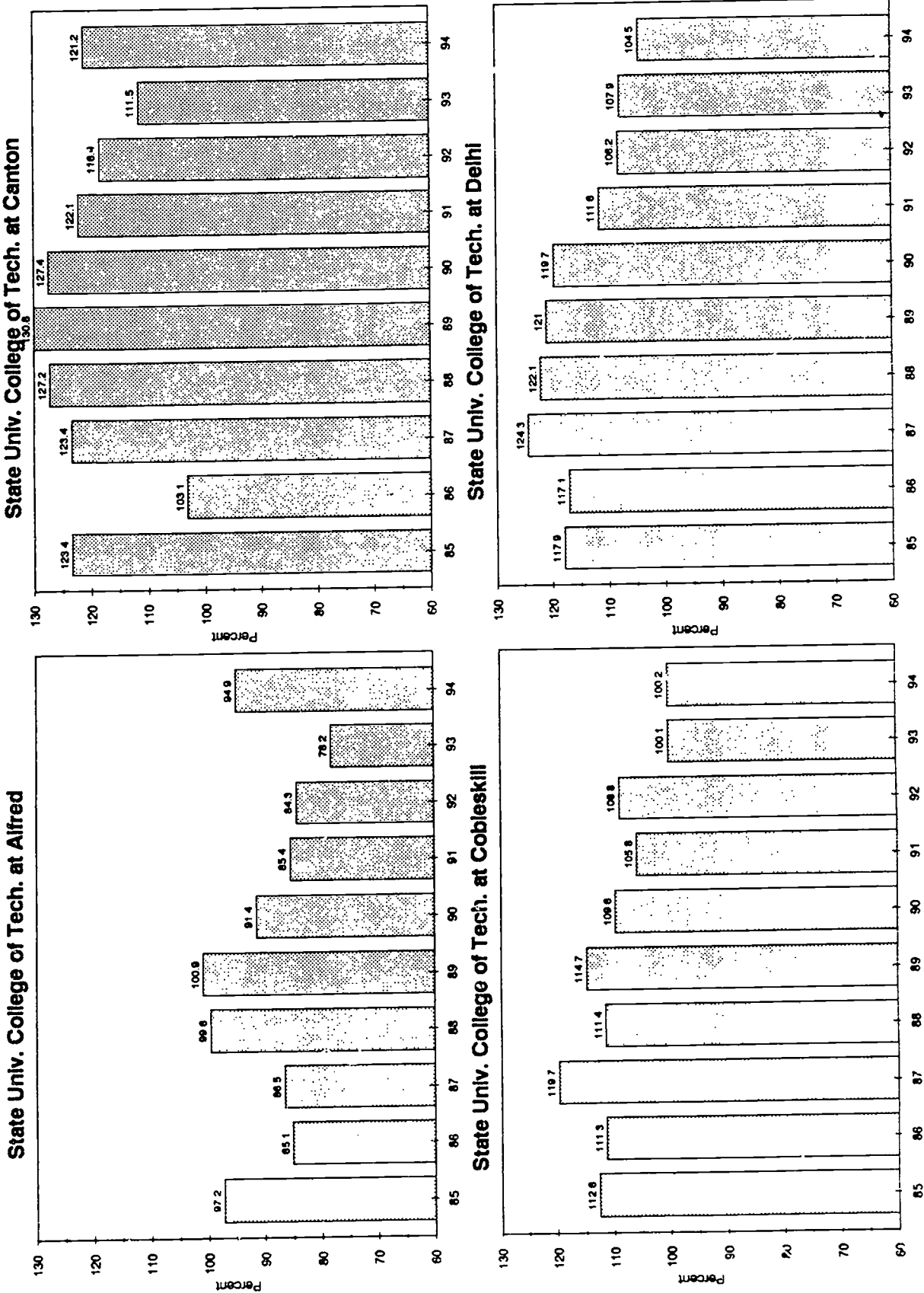


Figure 2: Trends in Percent Utilization for Each Institution

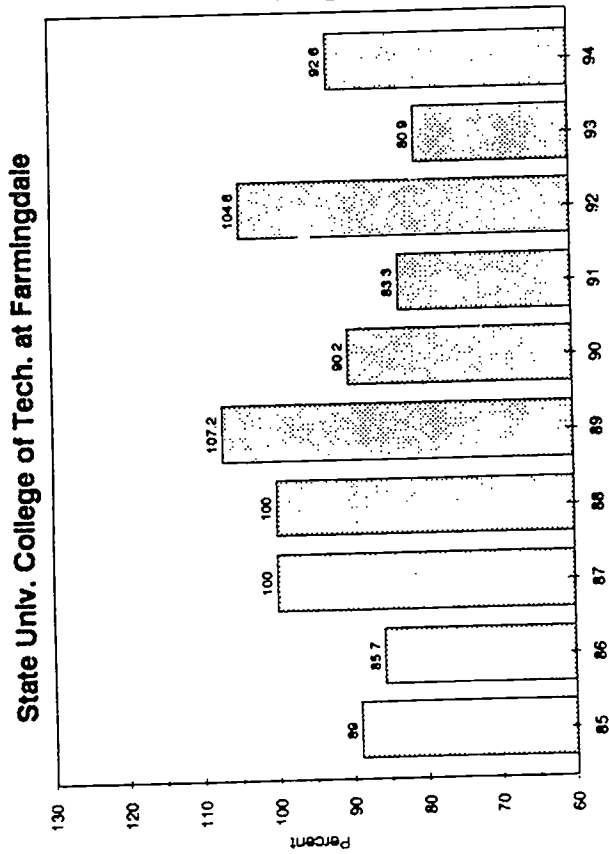
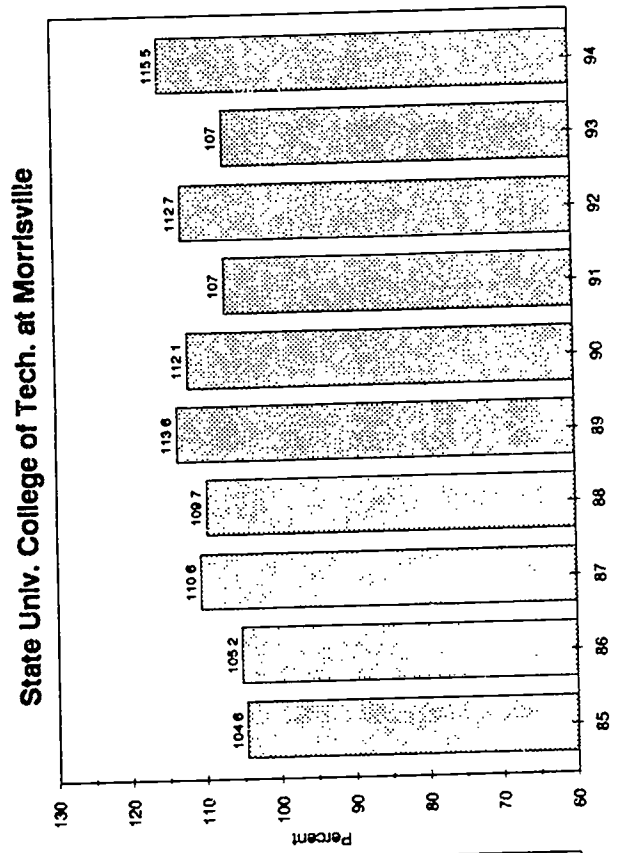


TABLE 10
NON-REVENUE ASSIGNMENTS IN RESIDENCE HALL FACILITIES
STATE-OPERATED INSTITUTIONS, ① STATE UNIVERSITY OF NEW YORK
FALL 1985 THRU FALL 1994

INSTITUTION	FALL 1985	FALL 1986	FALL 1987	FALL 1988	FALL 1989	FALL 1990	FALL 1991	FALL 1992	FALL 1993	FALL 1994
STATE-OPERATED INSTITUTIONS	5,529	5,533	4,453	4,149	3,735	3,836	3,836	4,246	3,783	3,921
UNIVERSITY CENTERS	1,867	1,301	1,200	1,276	1,308	1,310	1,255	1,197	1,108	1,111
ALBANY	416	228	192	204	207	219	228	233	199	212
BINGHAMTON	272	255	255	256	256	256	279	286	284	282
BUFFALO (INCLUDES HSC)	718	482	432	433	445	444	439	425	410	416
STONY BROOK (INCLUDES HSC)	461	336	321	383	400	391	309	253	215	201
UNIVERSITY COLLEGES	2,958	3,730	2,677	2,352	1,855	1,962	1,931	2,280	1,949	2,110
BROCKPORT	210	1,199	98	124	121	126	105	104	104	117
BUFFALO (COLLEGE)	624	626	775	783	271	255	254	253	233	231
CORTLAND	153	153	127	120	113	130	127	337	202	349
FREDONIA	326	340	337	233	142	142	135	127	127	135
GENESEO	390	375	380	172	173	182	171	174	171	174
NEW PALTZ	278	258	160	160	280	280	280	466	280	280
OLD WESTBURY	46	38	38	38	36	46	49	47	46	48
ONEONTA	146	124	124	127	126	119	122	103	103	102
OSWEGO	245	243	243	243	243	243	243	250	243	253
PLATTSBURGH	112	159	164	159	155	155	150	140	149	147
POTSDAM	204	150	166	128	112	219	202	214	191	202
PURCHASE	224	65	65	65	83	65	93	65	100	72
HEALTH SCIENCES CENTERS	64	66	71	73	92	88	89	277	287	304
BROOKLYN	18	21	20	9	9	9	6	9	22	22
SYRACUSE	46	45	51	64	83	79	83	268	265	282
SPECIALIZED COLLEGES	26	26	27	26	28	30	40	38	42	33
MARITIME	26	26	27	26	28	30	30	26	30	21
INST OF TECH. AT UTICA/ROME	N/A	N/A	N/A	N/A	N/A	N/A	10	12	12	12
COLLEGES OF TECH./AGRIC.	614	410	478	422	452	446	521	454	397	363
ALFRED	146	110	121	129	129	127	117	120	114	114
CANTON	40	36	36	36	38	40	40	36	36	31
COBLESKILL	137	74	137	75	77	77	77	85	85	77
DELHI	61	61	61	61	61	61	61	55	55	50
FARMINGDALE	157	57	51	49	75	67	136	84	38	29
MORRISVILLE	73	72	72	72	72	74	90	74	69	62

① Excludes Empire State College, College of Environmental Science and Forestry, College of Optometry, and the Statutory Colleges
SYSTEM ADMINISTRATION OFFICE OF
INSTITUTIONAL RESEARCH
STATE UNIVERSITY OF NEW YORK
SEPTEMBER 15, 1995

TABLE 11
 REVENUE PRODUCING UTILIZATION OF RESIDENCE HALLS
 FOR PURPOSES OTHER THAN RESIDENT STUDENT OCCUPANCY (BEDCOUNT)
 STATE-OPERATED INSTITUTIONS, ① STATE UNIVERSITY OF NEW YORK
 FALL 1985 THRU FALL 1994

INSTITUTION	FALL 1985	FALL 1986	FALL 1987	FALL 1988	FALL 1989	FALL 1990	FALL 1991	FALL 1992	FALL 1993	FALL 1994
STATE-OPERATED INSTITUTIONS	706	608	846	876	750	777	992	922	879	858
UNIVERSITY CENTERS	134	110	90	96	101	67	265	195	173	155
ALBANY	-	-	-	14	18	6	101	6	6	6
BINGHAMTON	-	-	-	-	-	-	-	-	-	-
BUFFALO (INCLUDES HSC)	-	-	-	-	-	-	28	30	20	40
STONY BROOK (INCLUDES HSC)	134	110	90	82	83	61	136	159	147	109
UNIVERSITY COLLEGES	536	350	661	641	520	541	548	575	549	543
BROCKPORT	193	-	201	197	201	201	201	201	201	201
BUFFALO (COLLEGE)	-	-	-	-	-	-	-	-	-	-
CORTLAND	-	-	-	-	-	-	-	-	-	-
FREDONIA	-	-	-	-	-	-	-	-	-	-
GENESEO	-	-	-	-	-	-	-	-	-	-
NEW PALTZ	-	-	120	120	-	-	-	-	-	-
OLD WESTBURY	-	-	-	-	-	-	-	-	-	-
ONEONTA	186	186	186	186	186	186	186	186	186	186
OSWEGO	-	-	-	-	-	-	-	-	-	-
PLATTSBURGH	15	24	14	14	9	30	59	64	44	54
POTSDAM	116	116	116	102	102	102	102	102	102	102
PURCHASE	26	24	24	22	22	22	-	22	16	0
HEALTH SCIENCES CENTERS	36	81	83	83	71	77	91	22	31	20
BROCKLYN	6	26	33	21	18	10	10	13	29	18
SYRACUSE	30	55	50	62	53	67	81	9	2	2
SPECIALIZED COLLEGES	0	4	12	56	58	92	88	130	126	140
MARITIME	-	-	-	-	-	-	-	-	-	-
INST. OF TECH AT UTICA/ROME	N/A	N/A	N/A	N/A	N/A	N/A	N/A	N/A	N/A	N/A
COLLEGES OF TECH./AGRIC.	0	63	0	0	0	0	0	0	0	0
ALFRED	-	-	-	-	-	-	-	-	-	-
CANTON	-	-	-	-	-	-	-	-	-	-
COBLESKILL	-	63	-	-	-	-	-	-	-	-
DELHI	-	-	-	-	-	-	-	-	-	-
FARMINGDALE	-	-	-	-	-	-	-	-	-	-
MORRISVILLE	-	-	-	-	-	-	-	-	-	-

① Excludes Empire State College, College of Environmental Science and Forestry, College of Optometry, and the Statutory Colleges
 SYSTEM ADMINISTRATION OFFICE OF
 INSTITUTIONAL RESEARCH
 STATE UNIVERSITY OF NEW YORK
 SEPTEMBER 15, 1995

TABLE 12
 NUMBER OF STUDENTS PER RESIDENT ASSISTANT ①
 STATE-OPERATED INSTITUTIONS, ② STATE UNIVERSITY OF NEW YORK
 FALL 1985 THRU FALL 1994

INSTITUTION	FALL 1985	FALL 1986	FALL 1987	FALL 1988	FALL 1989	FALL 1990	FALL 1991	FALL 1992	FALL 1993	FALL 1994
STATE-OPERATED INSTITUTIONS	25.0	24.9	25.6	25.6	25.0	24.6	24.4	24.6	26.0	25.7
UNIVERSITY CENTERS										
ALBANY	27.4	27.8	27.9	27.8	25.9	25.5	26.9	27.8	32.5	30.9
BINGHAMTON	32.7	34.5	34.4	34.8	30.8	32.8	32.2	30.4	30.9	27.6
BUFFALO (INCLUDES STONY BROOK (INCLUDING HSC))	29.9	29.6	28.7	28.9	28.0	28.2	29.9	28.9	30.1	30.7
	26.5	27.0	26.6	26.9	24.6	24.7	24.2	24.9	33.1	30.7
	23.3	23.2	24.3	23.2	22.5	20.3	23.6	27.3	35.5	34.8
UNIVERSITY COLLEGES										
BROCKPORT	25.0	24.7	26.0	26.0	26.0	25.6	24.7	24.2	24.8	24.4
BUFFALO (COLLEGE)	25.2	24.5	23.8	23.3	24.2	25.3	26.7	26.8	26.7	26.7
CORTLAND	19.4	19.5	18.4	16.6	20.8	21.1	19.2	19.2	21.3	21.0
FREDONIA	17.6	16.8	26.9	28.9	28.5	23.7	24.4	21.8	21.9	20.5
GENESEO	31.0	31.3	31.7	31.6	30.7	30.7	29.1	28.3	29.6	29.2
NEW PALTZ	26.6	26.5	25.9	25.4	24.4	24.7	24.2	23.6	24.5	24.9
	28.8	30.9	32.3	34.8	33.9	34.7	34.3	33.7	31.2	32.0
OLD WESTBURY	41.9	41.8	21.0	21.0	21.0	16.2	16.2	16.2	16.2	15.6
ONEONTA	24.0	22.5	23.3	23.7	22.6	23.3	20.5	24.1	22.9	24.5
OSWEGO	28.3	29.3	28.2	28.7	28.4	28.2	27.3	25.2	27.5	25.3
PLATTSBURGH	28.6	28.8	29.7	28.7	28.1	28.0	27.1	25.3	26.9	26.6
POTSDAM	25.8	22.9	25.8	25.6	24.9	24.1	22.8	22.2	23.1	21.3
PURCHASE	22.7	22.6	24.5	25.1	24.8	25.3	23.9	23.4	22.5	23.0
HEALTH SCIENCES CENTERS										
BROOKLYN	33.2	32.1	34.5	33.9	31.8	34.4	33.2	37.0	23.4	22.5
SYRACUSE	50.6	49.4	56.2	59.3	60.0	61.2	60.3	59.3	24.1	24.1
	23.8	22.8	24.5	22.2	18.8	22.0	20.6	22.1	22.4	19.9
SPECIALIZED COLLEGES										
MARITIME	14.4	13.5	13.3	13.7	10.8	16.5	20.0	19.8	15.3	19.5
INST. OF TECH. AT UTICA/ROME	14.4	13.5	13.3	13.7	10.8	16.5	16.2	16.3	11.8	15.5
	N/A	N/A	N/A	N/A	N/A	N/A	35.2	32.1	32.8	33.8
COLLEGES OF TECH./AGRIC.										
ALFRED	21.2	20.9	21.7	21.7	22.1	20.8	19.5	20.3	20.4	21.0
CANTON	16.0	17.6	16.0	16.5	16.7	15.5	15.9	15.1	14.9	15.9
COBLESKILL	26.4	23.7	28.4	29.3	28.4	26.3	25.2	27.2	25.6	26.9
DELHI	26.0	25.9	27.6	25.3	25.4	24.3	23.4	21.7	20.0	19.7
FARMINGDALE	20.1	16.8	19.0	19.2	19.5	19.3	18.0	16.8	22.4	23.9
MORRISVILLE	24.1	21.4	23.0	23.0	24.1	20.2	18.6	24.6	19.0	21.4
	23.6	24.1	25.3	26.5	27.5	26.3	20.5	26.5	27.0	27.5

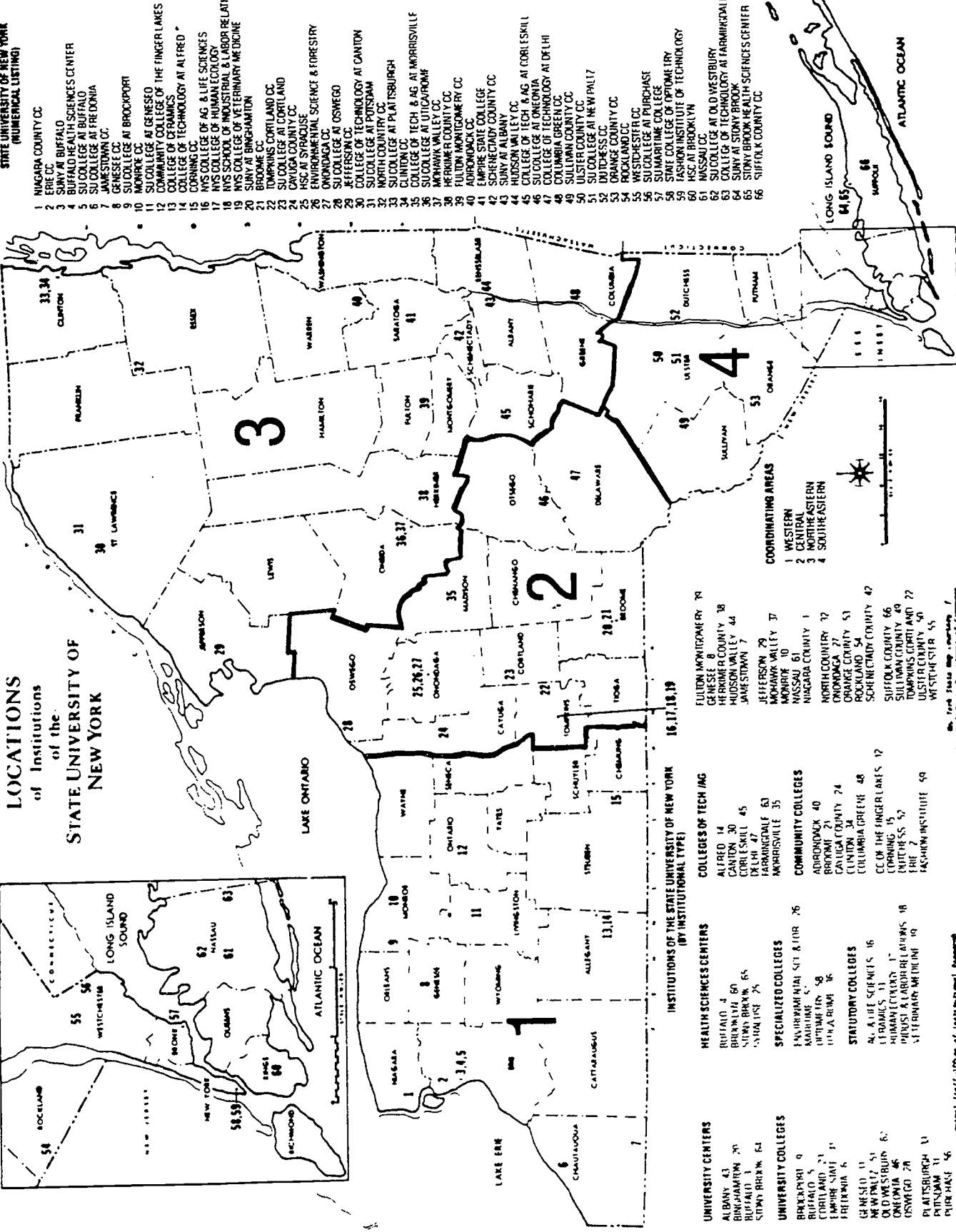
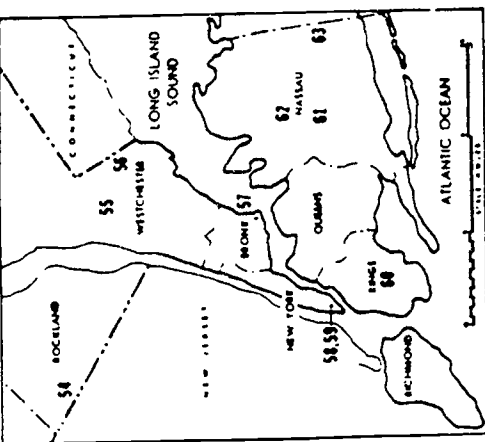
① Students reported as Resident Assistants perform a range of assignments which vary in type and commitment. Therefore, the ratios shown here do not necessarily reflect differences in Resident Assistant services available to students.

② Excludes Empire State College, College of Environmental Science and Forestry, College of Optometry, and the Statutory Colleges

SYSTEM ADMINISTRATION OFFICE OF
 INSTITUTIONAL RESEARCH
 STATE UNIVERSITY OF NEW YORK
 SEPTEMBER 18, 1995

PART THREE
APPENDIX

LOCATIONS of Institutions of the STATE UNIVERSITY OF NEW YORK



INSTITUTIONS OF THE STATE UNIVERSITY OF NEW YORK (NUMERICAL LISTING)

- 1 NIAGARA COUNTY CC
- 2 ERIE CC
- 3 SUNY AT BUFFALO
- 4 BUFFALO HEALTH SCIENCES CENTER
- 5 SUNY COLLEGE AT BUFFALO
- 6 SUNY COLLEGE AT FREDONIA
- 7 JAMESTOWN CC
- 8 GENESSEE CC
- 9 SUNY COLLEGE AT BROCKPORT
- 10 MONROE CC
- 11 SUNY COLLEGE AT GENESCO
- 12 SUNY COLLEGE OF THE FINGER LAKES
- 13 COMMUNITY COLLEGE OF FERRIS
- 14 COLLEGE OF TECHNOLOGY AT ALFRED
- 15 CORNING CC
- 16 SUNY COLLEGE OF AG & LIFE SCIENCES
- 17 SUNY COLLEGE OF HUMAN ECOLOGY
- 18 SUNY SCHOOL OF INDUSTRIAL & LABOR RELATIONS
- 19 SUNY COLLEGE OF VETERINARY MEDICINE
- 20 SUNY AT BINGHAMTON
- 21 BROOME CC
- 22 TOMPKINS CORTLAND CC
- 23 SUNY COLLEGE AT CORTLAND
- 24 CAYUGA COUNTY CC
- 25 HSC AT SYRACUSE
- 26 ENVIRONMENTAL SCIENCE & FORESTRY
- 27 ONONDAGA CC
- 28 SUNY COLLEGE AT OSWEGO
- 29 JEFFERSON CC
- 30 COLLEGE OF TECHNOLOGY AT CANTON
- 31 SUNY COLLEGE AT POTSDAM
- 32 NORTH COUNTRY CC
- 33 SUNY COLLEGE AT PLATTSBURGH
- 34 CLINTON CC
- 35 COLLEGE OF TECH & AG AT MORRISVILLE
- 36 SUNY COLLEGE AT UTICA/ROME
- 37 APOHAWK VALLEY CC
- 38 HERKIMER COUNTY CC
- 39 FULTON MONTGOMERY CC
- 40 ADIRONDACK CC
- 41 EMPIRE STATE COLLEGE
- 42 SCHENECTADY CC
- 43 SUNY AT ALBANY
- 44 HUDSON VALLEY CC
- 45 COLLEGE OF TECH & AG AT CORLESKILL
- 46 SUNY COLLEGE AT ONEONTA
- 47 COLLEGE OF TECHNOLOGY AT DELHI
- 48 COLUMBIA GREEN CC
- 49 SULLYMAN COUNTY CC
- 50 ULSTER COUNTY CC
- 51 SUNY COLLEGE AT NEW PALTZ
- 52 DUTCHESS CC
- 53 ORANGE COUNTY CC
- 54 ROCKLAND CC
- 55 WESTCHESTER CC
- 56 SUNY COLLEGE AT PURCHASE
- 57 SUNY COLLEGE OF OPTOMETRY
- 58 FASHION INSTITUTE OF TECHNOLOGY
- 59 HSC AT BROOKLYN
- 60 NASSAU CC
- 61 SUNY COLLEGE AT OLD WESTBURY
- 62 COLLEGE OF TECHNOLOGY AT FARMINGDALE
- 63 SUNY AT STONY BROOK
- 64 SUNY AT BROOKVILLE
- 65 SUNY AT STONY BROOK
- 66 SUFFOLK COUNTY CC

- UNIVERSITY CENTERS**
- ALBANY 43
 - BROOKHAVEN 30
 - BUFFALO 5
 - BUFFALO 3
 - STONY BROOK 62
- UNIVERSITY COLLEGES**
- BROCKPORT 9
 - BUFFALO 5
 - CORTLAND 21
 - EMPIRE STATE 31
 - FREDONIA 6
 - GENESSEE 11
 - NEW PALTZ 51
 - OLD WESTBURY 60
 - ONEONTA 46
 - OSWEGO 28
 - PLATTSBURGH 33
 - POTSDAM 31
 - PURCHASE 56
- HEALTH SCIENCES CENTERS**
- BUFFALO 4
 - BROOKVILLE 60
 - SUNY BROOK 65
 - SUNY PURCHASE 25
- SPECIALIZED COLLEGES**
- PARSONS SCHOOL OF DESIGN 5
 - UNIVERSITY COLLEGE OF THE FINGER LAKES 12
 - UNIVERSITY COLLEGE OF OPTOMETRY 57
 - UNIVERSITY COLLEGE OF TECHNOLOGY 58
 - UNIVERSITY COLLEGE OF VETERINARY MEDICINE 19
- COLLEGES OF TECH / AG**
- ALFRED 14
 - CANTON 30
 - CORLESKILL 44
 - DELHI 47
 - FARMINGDALE 63
 - MORRISVILLE 35
- COMMUNITY COLLEGES**
- ALBANY 43
 - BROOKHAVEN 30
 - BUFFALO 5
 - BUFFALO 3
 - CAYUGA COUNTY 74
 - CLINTON 34
 - COLUMBIA GREEN 48
 - CORNING 15
 - CORNING 15
 - EMPIRE STATE 31
 - ERIE 7
 - FASHION INSTITUTE 50
- COORDINATING AREAS**
- 1 WESTERN
 - 2 CENTRAL
 - 3 NORTHEASTERN
 - 4 SOUTHEASTERN

Map of New York State showing the locations of institutions of the State University of New York. The map is divided into four coordinating areas: 1. Western, 2. Central, 3. Northeastern, and 4. Southeastern.

Chronology of Dates of Establishment of Institutions of the State University of New York

1811 to 1900

1901 to 1979

	11-12	21-30	31-40	41-50	51-60	61-70	71-80	81-90	91-100	01-10	11-20	21-30	31-40	41-50	51-60	61-70	71-79
29 State University Number of Institutions														34	43	64	66
X University Centers Albany				1844 ^d										1946 ^c 1950			
Binghamton																	
Buffalo				1846													
Stony Brook															1957 ^{bc}	1962 ^{bc}	
X University Colleges																	
X Brockport				1841		1867 ^d											
X Buffalo						1867 ^d											
X Cortland						1868 ^d											
Empire State																	1971 ^{bc}
X Fredonia			1826			1866 ^b											
X Genesee							1871 ^d										
X New Paltz			1828						1885 ^d								1965 ^{bc}
Old Westbury									1887 ^d								
X Oneonta																	
X Oswego						1861											
						1867 ^d											
X Plattsburgh									1889 ^d								
X Potsdam			1816														1965 ^{bc}
Purchase																	
Health Science Centers																	
Buffalo				1846													1962 ^{bc}
Brooklyn						1858									1950 ^{bc}		
Stony Brook																	1970 ^{bc}
Syracuse			1834												1950 ^{bc}		
Specialized Colleges																	
X Environmental Science and Forestry												1911 ^d 1913 ^d					
X Maritime							1874										
Optometry																	1971 ^{bc}
Utica/Rome																	1966 ^{bc}
Statutory Colleges																	
X Agriculture and Life Sci										1900 ^b	1904 ^c						
X Ceramics													1925 ^d				
X Human Ecology																	1944 ^d
X Industrial & Labor Rel																	
X Veterinary Medicine									1894 ^b								
Colleges of Technology/Agriculture																	
X Alfred											1908 ^b						
X Canton											1906 ^b						
X Cobleskill											1911 ^b						
X Delhi											1913 ^b						
X Farmingdale											1912 ^b						
X Morneville											1908 ^b						
Community Colleges																	
X Adirondack														1946 ^b		1960 ^{bc}	
X Broome																	
Cayuga County																	
Clinson																	
Columbia-Greene																	
Community College of the Finger Lakes																	
Corning																	
Dutchess																	
X Erie														1946 ^{bc}			
Fashion Institute														1944			
Fulton-Montgomery																	
Genesee																	
Herkimer County																	
Hudson Valley																	
Jamestown																	
Jefferson																	
X Mohawk Valley														1946 ^b			
Monroe																	
Nassau																	
X New York City																	
Niagara County																	
North Country																	
Onondaga																	
Orange County																	
Rockland																	
Schenectady County																	
Suffolk County																	
Sullivan County																	
Tompkins-Cortland																	
Ulster County																	
X Westchester																	1946 ^b

FOOTNOTES

^aOriginal constituent institutions of the State University of New York at its establishment in 1948.

^bDate of establishment as a state college or institution.

^cDate of incorporation into State University of New York.

^dAs of July 1, 1975, New York City Community College and the other community colleges (not shown here) sponsored by the New York City Board of Higher Education were no longer a part of the State University of New York.

NOTE: Dates preceding date indicated for establishment as a state college or institution refer to institutional antecedents of the present college or university. These may have been private institutions or controlled by a governmental entity other than the state. Intermediate institutional developments such as other college affiliation or date of first baccalaureate program offering have been omitted for the sake of brevity.

*The Health Sciences Centers at Buffalo and Stony Brook are shown separately here from their respective core campuses.

PUBLICATIONS LIST

PUBLICATION LIST
CENTRAL STAFF OFFICE OF INSTITUTIONAL RESEARCH
 * Indicates OUT OF PRINT

REPORT TITLE	YEARS						
ACADEMIC LIBRARY STATISTICS (Now done as a STATISTICAL RELEASE.)	DATA YEAR	1967-1969	1969-1970	1972-1975	1976-1977	1978-1979	1980-1983
	RPT. NO.	*8	*18	*12-76	*12-76	*12-80	12-84
AGE GROUP AND SEX OF STUDENTS	DATA YEAR	1974	1975	1976	1977	1978	1979
	RPT. NO.	*8-75	*8-76	*8-77	8-78	8-79	8-81
"	DATA YEAR	1980	1981	1982	1983	1984	1985
	RPT. NO.	8-82	8-83	8-84	8-84A	8-85	8-86
"	DATA YEAR	1986	1987	1988	1989	1990	1991
	RPT. NO.	8-87	8-88	8-89	8-90	8-91	8-92
"	DATA YEAR	1992	1993	1995			
	RPT. NO.	8-93	8-94	8-95			
APPLICATION AND ENROLLMENT PATTERNS OF TRANSFER STUDENTS	DATA YEAR	1970	1971	1972	1973	1974	1975
	RPT. NO.	*15	*29	*41	*6-75	*6-76	6-76A
"	DATA YEAR	1976 & 1977	1978	1979	1983	1984	1985
	RPT. NO.	6-79	6-80	6-81	6-84	6-85	6-86
"	DATA YEAR	1986	1987	1988	1989	1990	1991
	RPT. NO.	6-87	6-88	6-89	6-90	6-91	6-92
"	DATA YEAR	1992	1993	1994			
	RPT. NO.	6-93	6-94	6-95			
ATTRITION & RETENTION OF FIRST-TIME, FULL-TIME STUDENTS IN TWO YEAR AND BACCALAUREATE DEGREE PROGRAMS (Partial history of later cohorts included starting with Rpt. 4-80.) (Postsecondary Opportunity Program Students included starting with Rpt. 4-87)	CLASS OF	1973	1974	1975 & 1976	1977 & 1978	1982	1983
	RPT. NO.	*4-74	*4-76	*4-79	*4-80	4-85	4-87
"	CLASS OF	1984	1988	1989	1991	1992	
	RPT. NO.	4-87A	4-92	4-92A	4-94	4-95	
CAMPUS SCHOOL STATISTICS	DATA YEAR	1966-1968					
	RPT. NO.	*3					
CHARACTERISTICS OF INSTITUTIONS UNDER THE PROGRAM OF THE STATE UNIVERSITY OF NEW YORK	DATA YEAR		1970				
	RPT. NO.		*25				
DEGREES AND OTHER FORMAL AWARDS (Latest print-out available upon request.)	DATA YEAR	1968					
	RPT. NO.	*B-1					
DEGREE AND OTHER FORMAL PROGRAMS CURRENTLY OFFERED (Latest print-out available upon request.)	DATA YEAR	1969	1971	1980	1982	1984	1987
	RPT. NO.	*	*26	*15-80	*15-82	15-84	15-87
DIRECTORY OF SELECTED CAMPUS ADMINISTRATIVE PERSONNEL OF THE STATE UNIVERSITY OF NEW YORK	DATA YEAR		1971				
	RPT. NO.		*				
EMPLOYEE CHARACTERISTICS AND SALARY STATISTICS	DATA YEAR		1970				
	RPT. NO.		*23				
*ENROLLMENT AND DEGREES GRANTED BY ACADEMIC PROGRAMS (Latest print-out available upon request.)	DATA YEAR	Annual 1975-1977 & Degrees 1974-75 to 1976-77					
	RPT. NO.	*14-78					
ENROLLMENT BY ACADEMIC PROGRAM (Latest print-out available upon request.)	DATA YEAR	1968	1968-1971	1969-1972	Enri 1975-1977 & Degree	1974-75 to 1976-77	
	RPT. NO.	*C-1	*33	*5-74	*14-78		
"	DATA YEAR						
	RPT. NO.						
ENROLLMENT, HOUSING AND FINANCIAL AID OF MINORITY GROUP STUDENTS (See STATISTICAL RELEASES for later years.)	DATA YEAR	1968					
	RPT. NO.	*1					
FACULTY AND STAFF STATISTICS BY JOB CATEGORY, ETHNIC GROUP, TENURE, RANK AND SEX	DATA YEAR		1970				
	RPT. NO.		*				

PUBLICATION LIST
CENTRAL STAFF OFFICE OF INSTITUTIONAL RESEARCH
 * Indicates OUT OF PRINT

REPORT TITLE	YEARS							
GEOGRAPHIC ORIGINS OF FIRST TIME STUDENTS (Now included in RPT. 2-84 to date)	DATA YEAR	1968	1969	1970	1971	1972	1973	1974
	RPT NO	*6	*13	*22	*35	*39	*3-75	*3-76
"	DATA YEAR	1975	1976	1977 & 1978	1980 & 1981			
"	RPT NO	*3-76A	*3-78	3-80	3-83			
GEOGRAPHIC ORIGINS OF STUDENTS (Includes first time & transfer students from RPT 2-84 to date)	DATA YEAR	1968	1969	1970	1971	1972	1973	1974
	RPT NO.	*5	*12	*21	*36	*42	*2-75	*2-76
"	DATA YEAR	1976	1978	1977	1979	1981	1982	1983
"	RPT NO	2-78	2-79	2-80	2-81	2-83	2-84	2-84A
"	DATA YEAR	1984	1985	1986	1987	1988	1989	1990
"	RPT NO	2-85	2-86	2-87	2-88	2-89	*2-90	2-91
"	DATA YEAR	1991	1992	1993	1994			
"	RPT. NO	2-92	2-93	2-94	2-95			
GEOGRAPHIC ORIGINS OF TRANSFER STUDENTS (Now included in RPT. 2-84 to date)	DATA YEAR	1977 & 1978						
	RPT. NO	17-80						
GRADUATE STUDENT ADMISSIONS SURVEY	DATA YEAR	1970	1971	1972	1973	1974	1975	1976
	RPT NO	*17	*32	*38	1-74	1-75	1-76	1-77
HEADCOUNT ENROLLMENT AND FULL TIME EQUIVALENT WORKLOAD STATISTICS OF CREDIT COURSE STUDENTS (Now done as a STATISTICAL RELEASE)	DATA YEAR	1968-1969	1969-1970	1970-1971				
	RPT. NO	*7	*10	*24				
HIGH SCHOOL STATUS OF FIRST-TIME CREDIT COURSE STUDENTS (Now done as a STATISTICAL RELEASE)	DATA YEAR	1979 & 1980						
	RPT. NO.	18-82						
INSTRUCTIONAL LOCATION AWAY FROM THE MAIN CAMPUS	DATA YEAR	1979	1986	1987	1988	1989	1990	1991
	RPT NO	*16-80	16-87	16-88	16-89	16-90	16-91	16-92
"	DATA YEAR	1992-93	1992-93	1993-94				
"	RPT. NO.	16-94	16-94A	16-95				
INVENTORY OF SELECTED INTERINSTITUTIONAL COOPERATIVE ARRANGEMENTS	DATA YEAR	1971						
	RPT. NO	*19						
MIGRATION OF U.S. COLLEGE STUDENTS WITH EMPHASIS ON NEW YORK STATE	DATA YEAR	1968						
	RPT. NO	*27						
MINORITY GROUP ENROLLMENT, HOUSING AND FINANCIAL AID STATISTICS	DATA YEAR	1969-71						
	RPT. NO	*34						
NON-CREDIT INSTRUCTIONAL ACTIVITIES	DATA MONTHS & YEAR	1984	1/1-6/30, 198	7/1-12/31, 1985	1/1-6/30, 1986			
	RPT. NO.	20-85	20-85A	20-86	20-87			
"	DATA MONTHS & YEAR	7/1-12/31, 1986		1/1-6/30, 1987	7/1-12/31, 1987			
"	RPT NO	20-87A		20-88	20-88A			
"	DATA MONTHS & YEAR	1/1-6/30, 1988		7/1-12/31, 1988	1/1-6/30, 1989			
"	RPT NO	20-89		20-89A	20-90			
"	DATA MONTHS & YEAR	7/1-12/31, 1989		1/1-6/30, 1990	7/1-12/31, 1990			
"	RPT NO	20-90A		20-91	20-91A			
"	DATA MONTHS & YEAR	1/1-6/30, 1991		7/1-12/31, 1991	1/1-6/30, 1992			
"	RPT. NO	20-92		20-92A	20-93			
"	DATA MONTHS & YEAR	7/1-12/31, 1992		7/1-12/31, 1993	7/1-12/31, 1994			
"	RPT NO	20-93A		20-94	20-95			
PLACEMENT OF PERSONS COMPLETING PREPARATION FOR EDUCATION CERTIFICATIONS	DATA YEAR	1975	1975-1976, 1976-1977 & 1977-78					
	RPT NO	*13-76	*13-80					
PREPARATION OF EDUCATIONAL PERSONNEL (Now done as a STATISTICAL RELEASE)	DATA YEAR	1967-1968	1969-1971	1972-1975	1973-1976	1977-1979		
	RPT NO	*D-1	*28	* 7-76	*10-76A	*10-80		
SUMMER CREDIT COURSE STUDENTS (Now done as a STATISTICAL RELEASE)	DATA YEAR	1968-70	1971					
	RPT NO	*14	*20					

PUBLICATION LIST
CENTRAL STAFF OFFICE OF INSTITUTIONAL RESEARCH
* Indicates OUT OF PRINT

<u>REPORT TITLE</u>	<u>YEARS</u>							
TRENDS IN ENROLLMENT AND DEGREES (Latest report includes earlier years.)	DATA YEAR	1948-1970	1948-1972	1948-1974	1948-1976	1948-1979	1948-1980	
	RPT. NO.	*11	*37	*7-75	*7-77	*7-80	*7-81	
"	DATA YEAR	1948-1984	1948-1985	1948-1986	1948-1987	1948-1988	1948-1989	
"	RPT. NO.	7-85	7-86	7-87	7-88	7-89	7-90	
"	DATA YEAR	1948-1990	1948-1991	1948-1992	1948-1993	1948-1994		
"	RPT. NO.	7-91	7-92	7-93	7-94	7-95		
TRENDS IN TUITION AND OTHER BASIC STUDENT CHARGES (Latest report includes earlier years)		1963-64-1993-94		1994-95				
	RPT. NO.	19-94		19-95				
TUITION WAIVERS HONORED BY STATE-OPERATED INSTITUTIONS OF THE STATE UNIVERSITY OF NEW YORK	DATA YEAR	1970-71 & 1971-72						
	RPT. NO.	*31						
UTILIZATION OF RESIDENCE HALL FACILITIES	DATA YEAR	1974 & 1975	1976	1977	1978	1979	1980	1981
	RPT. NO.	9-75	9-76	9-77	9-79	9-80	9-81	9-81A
"	DATA YEAR	1982	1983	1984	1985	1986	1987	1988
"	RPT. NO.	9-82	9-84	9-85	9-86	9-87	9-88	9-89
"	DATA YEAR	1989	1990	1991	1992	1993	1994	
"	RPT. NO.	9-90	9-91	9-92	9-93	9-94	9-95	